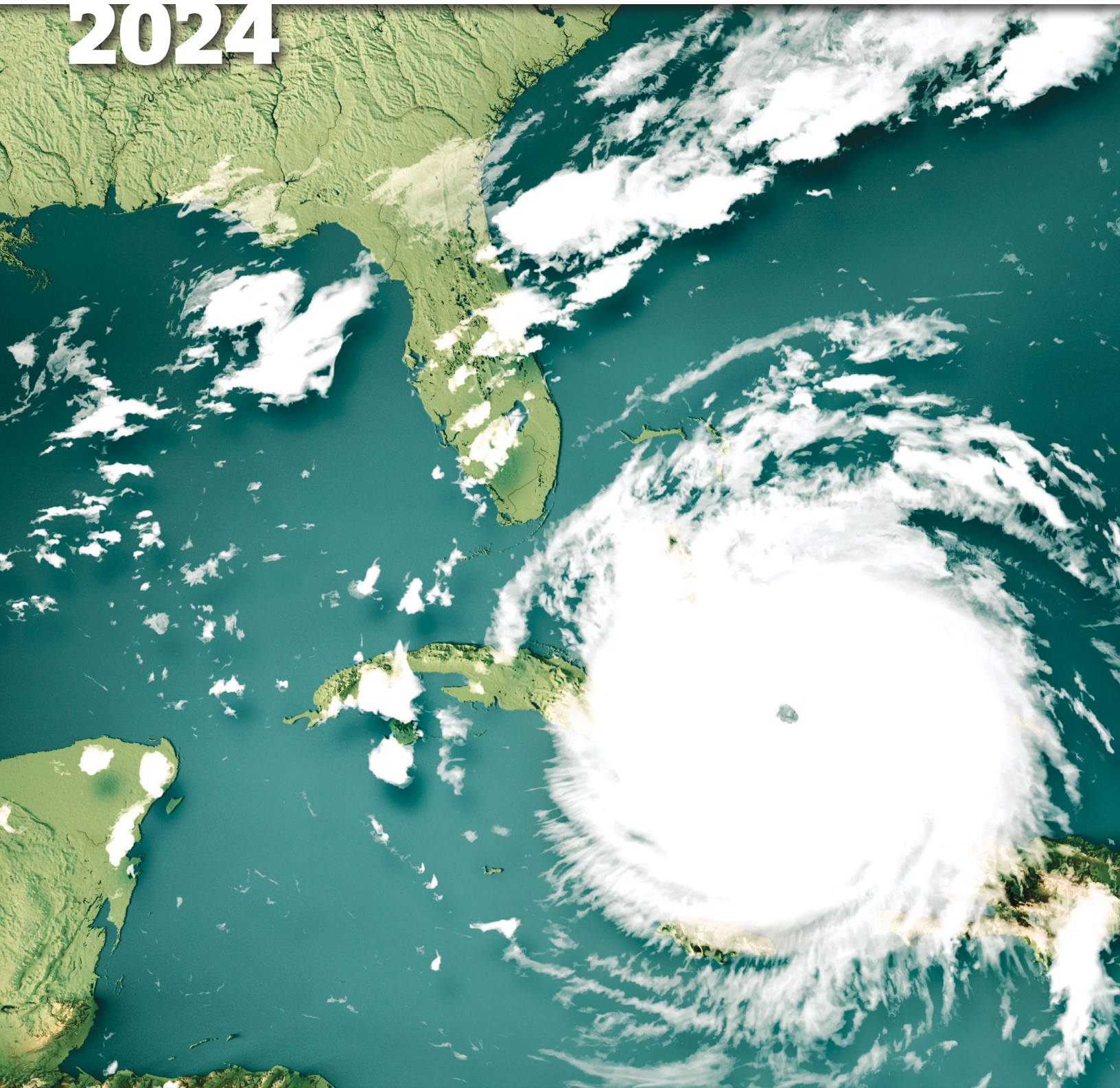


HURRICANE GUIDE

2024



Florida Tech Operations and Planning

The Department of Security website has information regarding hurricane preparedness and other campus safety initiatives.

Florida Tech Emergency Plans

Emergency Information Line: 888-820-4636 (recorded updates)

Safety Alerts - Rave

Florida Tech Safe app • fit.apparmor.com/clients/fit.edu

National Hurricane Center

The National Hurricane Center (NHC) is the official source for predictions, advisories, warnings, satellite images and analysis of hazardous tropical weather. • nhc.noaa.gov

Federal Emergency Management Agency (FEMA)

The "Ready" website has information to help you prepare for disasters. This includes putting together an emergency plan and emergency supply kit. • ready.gov

Florida Division of Emergency Management (FDEM)

FDEM provides pre- and post-event information and planning tools on its website. • floridadisaster.org

City of Melbourne

melbourneflorida.org

Your individual preparedness contributes significantly to Florida Tech's ability to prepare for, respond to and recover from any storm—minor or major. The information contained in this guide is intended to help you prepare.

Additional hurricane preparedness information is available from the FEMA website at ready.gov/hurricanes as well as other resources listed in this guide.

This guide can serve as your ready reference for the specific activities that are likely to occur should a tropical storm or hurricane threaten the Melbourne and Brevard County area. Hurricane season encompasses June through November with August to October being the most active months. Prior to this time, it is important to prepare by maintaining a disaster supply kit, having a plan in place, and keeping track of the weather and university communications.

Hurricane season begins on June 1 and runs through Nov. 30.

Tropical depressions are low-pressure storm systems with maximum sustained surface winds of 38 mph or less. Tropical storms have maximum sustained surface winds of 39–73 mph. Hurricanes are large, spiraling tropical cyclones with wind speeds of at least 74 mph and can elevate to over 160 mph and unleash more than 2.4 trillion gallons of rain per day. 40% of the hurricanes that occur in the U.S. hit Florida, so it's critical for the Florida Tech community to be alert and prepared. Remember, tropical storms and hurricanes can intensify and change direction within hours.

The National Weather Service (NWS) and National Hurricane Center (NHC) release information regarding storm strength, forward speed, timing and landfall probabilities. States, communities, local weather forecasters and others rely on this information to decide when to take preparedness actions and to make evacuation recommendations and decisions. Florida Tech monitors weather forecasts from the NWS and NHC and receives situational reports from both Florida Division of Emergency Management and the Brevard County Office of Emergency Management regarding actions taken for our community.

Watch vs. Warning

Hurricane watches and warnings are issued by the National Hurricane Center; these designations correspond to hours before the estimated time of arrival of gale force or hurricane force winds, and the likelihood the event is to occur.

A watch lets you know that weather conditions are favorable for a hazard to occur. Watches are issued 48 hours in advance of the anticipated onset of tropical storm force winds. During a weather watch, gather awareness of the specific threat and prepare for action—monitor the weather to find out if severe weather conditions have deteriorated and discuss your protective action plans with your family.

A warning requires immediate action. Warnings are issued 36 hours in advance of the anticipated onset of tropical storm force winds. This means a weather hazard is imminent—it is either occurring (for example, a tornado has been spotted)—or it is about to occur at any moment. It is important to act during a weather warning.

Watches and warnings associated with tropical weather are:

- **Tropical Storm Watch**—Tropical storm conditions are possible within the specified area.
- **Hurricane Watch**—Hurricane conditions are possible within the specified area.
- **Tropical Storm Warning**—An announcement that tropical-storm conditions are expected within the specified area.
- **Hurricane Warning**—Hurricane conditions are expected within the specified area.
- **Extreme Wind Warning**—Extreme sustained winds of a major hurricane (115 mph or greater), usually associated with the eyewall, are expected to begin within the hour.

Florida Tech Tip

The National Hurricane Center is the best resource to find accurate and up-to-date forecasts.



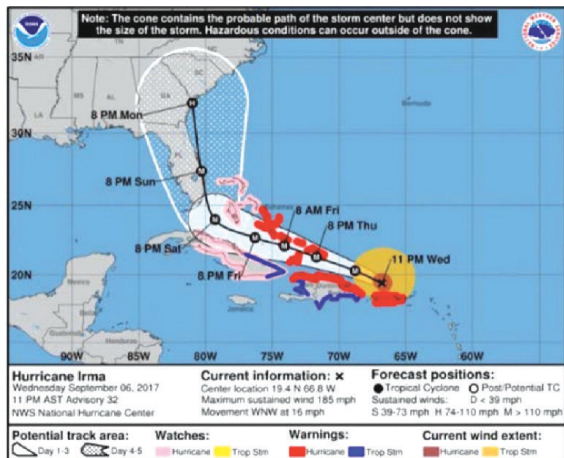
Forecast Cone

The National Hurricane Center (NHC) uses models and historical data to predict the path of the center of tropical storms and the eye of hurricanes. The forecast cone is a projected path of the hurricane's center within five days. It is important to remember that the effects of a tropical cyclone can be experienced well away from the center of the storm and well outside of the forecast cone. The actual path of the storm's center does not always stay within the cone.

The line in the center of the cone is typically the best estimated path of the threatening storm and can have a margin of error up to 99 miles during a 48-hour outlook. Community members living in any area inside the cone should prepare for some effects from the storm.

Wind Scale

The Saffir-Simpson Hurricane Wind Scale is a 1–5 rating based on a hurricane's sustained wind speed. Hurricanes reaching Category 3 and higher are considered "major hurricanes" because of their potential for significant loss of life and damage. However, Category 1 and 2 storms are still dangerous and require protective and preparation measures.



Example of a storm path projection showing the "Forecast Cone."

Saffir-Simpson Hurricane Wind Scale

Category	Sustained Winds
1	74–95 MPH
2	96–110 MPH
3 (Major)	111–129 MPH
4 (Major)	130–156 MPH
5 (Major)	157 MPH or higher

Preparing for a Hurricane

Class Cancellations and Campus Closures/Evacuations

Communications regarding class cancellations, campus closures, evacuations and re-openings will be posted to the main Florida Tech website and sent to students and employees via phone and email as a Florida Tech Rave Alert. It is important to monitor official Florida Tech communications during emergencies as conditions can change rapidly. Continue to check your Florida Tech email and the Florida Tech website for information. Students and employees should also verify they are enrolled in the Emergency Alert System—Rave Alert.

Should it be necessary to evacuate the campus, faculty members will communicate with students regarding assignments and, if possible, remain in touch with students via email. Prior to any evacuation, resident students will meet with their resident assistant (RA) to review procedures.

Make a Plan

You should begin making a general evacuation plan now. As the storm nears, communicate your evacuation plan to family, friends and co-workers so someone knows where you are. If you change your plan, make sure to communicate the change. Students should have conversations with their families to review their hurricane plans and discuss where they will go in the event the campus is evacuated.

- Visit floridadisaster.org for assistance developing an emergency plan.
- Visit floridadisaster.org to find evacuation zones and fema.gov to find flood zones by address.

Disaster Supply Kit

It is important to maintain a disaster supply kit year-round with enough supplies to last 72 hours. Supply kits should include, but are not limited to:

- Water, one gallon per person, per day
- Nonperishable food
- Manual can opener
- Battery-powered or hand crank; AM/FM radio
- NOAA weather radio with extra batteries
- Flashlight with extra batteries
- First aid kit
- Personal hygiene items
- Blanket
- Extra clothes and comfortable, closed-toe walking shoes
- Medications
- Cash

Visit ready.gov/kit for more information on putting together a disaster supply kit.

Residence Evacuation Preparation

Take your most important belongings, valuables and personal documents with you. Students should remember to take course materials with them.

When evacuating, completely empty and unplug your refrigerator and wrap towels around the base to absorb water due to defrosting. Unplug all power cords before leaving. Close and lock your windows tightly. Do not tape your windows. Move any items that may be damaged by water off the floor and cover electronic items with plastic. Remove any trash and lock the door.

