

# the Pelican

A Newsletter for the F.I.T. Family

VOLUME XII

NOVEMBER, 1980

NUMBER 11

## Alonso Heads FITRE

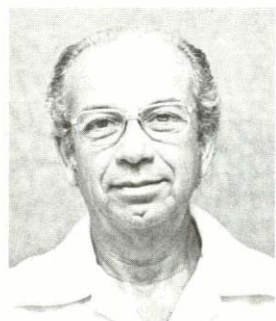
Dr. **Marcelo** Alonso, an internationally known nuclear physicist and **official** of the Organization of American States (**OAS**) for two decades, has been named executive director of the newly activated Florida Institute of **Technology** Research Engineering Inc. (**FITRE**).

In his new past, Dr. Alonso will guide the activation of the university organization to provide technical and engineering support to industry and government agencies on a project and consultant basis.

"**FITRE** is **service** oriented, not **academically** oriented," Alonso explained, "initially we are relying strictly on the capabilities of the faculty. Our intention is to eventually create a parallel organization with its **own** staff."

In the immediate future, **FITRE** is to **concern** itself with **research** and **assistance** programs centered on the science, engineering, and technology of oceanography, inland water **resources**, energy and computers.

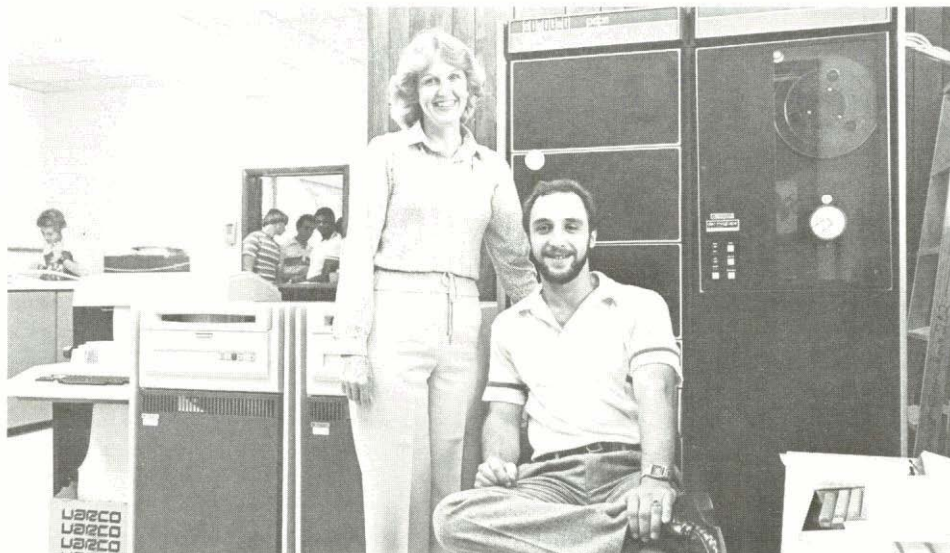
"We are planning to operate not only at the national level but at the international level as well," said **Alonso**, a respected member of the world scientific community.



**Marcelo Alonso**

In leading **FITRE's** development, Alonso will rely on professional **experience** that includes 20 years of directing **science** and technology programs for the Organization of American States. The work entailed annually overseeing \$10 million worth of research activities conducted in Latin America.

Alonso, also a former professor at Georgetown University, has authored several **books** on advanced physics. His **writings** have been translated into 10 **languages**. **Interests** have centered on the **relationship** of energy **policies** and economic development.



### New Home

Dee Dee **Pannell**, director of the relocated **Academic** Computer Center, poses with the machinery and with student assistant **Dominick Di Guimmi**. Story on Page **Three**.

## Everette Guides Flight Technology

Ed Everette, a pilot and flight **instructor** who has logged about **10,000** air hours, has been named head of the Flight Technology Department at the School of Aeronautics. He succeeds Curtis **Truver** in the **post**.

**Everette's** prime responsibility will be seeing that about 800 students **receive** instruction in air operations courses such as weather, navigation, engines and **aircraft performance**.

Everette, who received his MBA. from F.I.T., is a long-standing member of the Aeronautics adjunct faculty and is experienced in the flying of 26 types of aircraft. A **22-year** veteran of the Air Force, he commanded tactical flying organizations including a unit assigned to Thailand during the Vietnam War.

Staff assignments in the Air Force

included service as Air Operations Officer in the National Military Command Center of the Joint **Chiefs** of Staff in Washington, D.C. He retired from the service as chief of **base** operations and **training** division at **Patrick** AFB.



**Ed Everette**

Everette commutes to the university from Cocoa Beach, where he and his wife, Ada, enjoy waterfront living.

## Student Population Increases

Overall enrollment in university programs grew by 11 percent for the fall semester as compared to enrollment a year earlier.

The student population at Melbourne stood at 3,959 out of a total university enrollment of 5,848. Another 697 students were **enrolled** at the Jensen Beach campus, and 1,192 were involved in

graduate studies the university offers at sites in several states.

"The **overall** enrollment met our **expectations**," said Dr. **Barry Fullerton**, vice president for student affairs.

At Melbourne, enrollment of fulltime undergraduate students in the schools of **Science** and **Engineering**, **Management**

Continued on Page Three

# Campus Notes

The September issue of "Management World," the official publication of the Administrative Management Association, included an article written by Dr. **Jack Gayle** and Dr. **Bob Searle**. In their article, "Maslow, Motivation and the Manager," the management professors reviewed research in the area of employee motivation and discussed the implication of existing theories on management policies.

Dr. **Norbert W. O'Hara**, member of the Sea Grant Association's Executive Committee, is pleased to announce that **F.I.T.'s** recent designation as a member of the Sea Grant College System was formally announced at the Annual Sea Grant Conference. In addition, Dr. **O'Hara's** recent Sea Grant publication, entitled "Identification of Florida Marine Related Organizations," can be obtained through the office of Sea Grant at the University of Florida.

**Drs.** Jerome H. Smith and **Dean S. Folse** of the University of Texas Medical Branch, Galveston, recently visited the Medical Research Institute to confer with **Drs. Arvind M. Dhople, Joseph A. Zeigler,** and **Eleanor E. Storrs** on the pathology of leprosy in armadillos. They are **collaborators** on an **F.I.T.** program sponsored by the National Institute of Allergy and Infectious Diseases. **Drs.** Smith and Folse were the first investigators to independently confirm the finding of Dr. **Storrs**

and her collaborators that a leprosy-like disease occurs naturally in wild armadillos in Louisiana.

**Judy Henson** has been promoted to Associate Director of Public Services, overseeing the work done in the circulation and reference departments.

**Pam Hobson** has been promoted to Associate Director of Technical Services and will oversee the technical processing of the **books** at Melbourne, Jensen Beach, and **MRI**.

**Sally Hatton**, senior technician for **cataloging**, completed 15 years of service in the library recently.

**Diane Steward**, library clerk for the circulation department, married **Shahriar Shahroozi** on October 14, in the **F.I.T. Gardens**.

**Jack Schwalbe** of Civil Engineering was workshop chairman at the Annual Meeting of the Society for Experimental Stress Analysis, recently held in Ft. Lauderdale. Workshops which were conducted were: strain gauges in extreme environments, acoustic emission technology, and organizing strain gauge technical training programs. Schwalbe was also honored to be asked to serve on the Technical Committee on Strain Gauges.

Since the fall term started, library reference staff members **Rita Carmona-Treger** and **Joan LeMosy** have presented a seminar on library **resources** to new

environmental science graduate students. Also given were a seminar on computer literature searches and a presentation on basic engineering materials to freshmen engineering students. All reference staff members have taken turns giving orientation tours to writing class students.

Dr. **Roger Manley**, department head of Management Science, recently gave an address entitled "Occupational Stress: Causes, Symptoms and Stress Management Techniques." The talk was given to approximately 120 Department of Defense personnel at the Equal Opportunity Management Institute at Patrick AFB.

Dr. **John C. Hozier**, assistant professor of Biological Sciences, attended the Human Mutation Conference at Albany, N.Y., and the annual meeting of the American Society of Human Genetics in New York City. Dr. **Hozier** and staff members of the Cytogenetics Laboratory are participating in an epidemiologic survey of families with high incidences of **kidney** cancer. The study, funded by the National Cancer Institute, is being conducted in collaboration with the University of Minnesota Medical **School**. The investigators are looking for **carriers** of chromosome defects that may be associated with hereditary kidney **carcinoma**.

## Welcome To F.I.T.

Dr. **Alan R. Rice** has joined **Oceanography** and **Ocean Engineering** as an assistant professor, and will be **working** primarily with the ocean engineering program. Dr. Rice holds a **B.S., M.S.,** and **D.E. Sci.** degree in nuclear Engineering from Columbia University. He comes to **F.I.T.** from the Department of Ocean Engineering, University of Newcastle upon Tyne, England. His research interests center on geophysical fluid dynamics, the development of marine seabed penetrometers, and the disposal of radioactive wastes at sea.

Dr. Charles T. **Fulton** has joined Mathematical Sciences as associate professor of mathematics. He comes to the university from Pennsylvania State University with earlier faculty experience at the University of New Mexico and Northern **Illinois** University. Dr. Fulton has a **B.A.** from the University of Redlands, and **M.S.** from the University of Minnesota and the **Dr. rer. nat.** from **Rheinisch-Westfälische Technische Hochschule** Aachen in West Germany.

Three new faculty members at the School of Aeronautics have been announced by Dean **Lauderbaugh**.

**Richard D. McCreary**, with a Master's degree in transportation from the **Univer-**

sity of Pittsburgh, has a distinguished flying background in all types of **aircraft** including heavy four-engine transports. He is a specialist in surface transportation modes as well as air. He was a freight traffic analyst with the Southern **Pacific** Railroad and was with the Pennsylvania Department of Highways in traffic management. "Mac," his wife and daughter live at the beach in Indialantic.

**Pierre [Pete] A. Tisdale**, with a **B.S.** from the Military Academy and a **M.S.** from Florida State in **R & D** management, joined the adjunct faculty in 1976. **His** experience as a mathematics instructor at West Point serves the faculty well with presenting its aviation mathematics courses. Pete is also a heavy **four-engine recip** and jet pilot, and well **qualified** to teach all School of Aeronautics air operations courses. Pete and his family are also beach dwellers.

**Dan Carson**, with a **B.B.A.** from Florida Atlantic and an **M.B.A.** from **F.I.T.**, brings to the School of Aeronautics faculty **savoir faire** of the commercial airline industry. He is a licensed **flight engineer** and authorized by the FAA to conduct the flight engineer **certification** program. He also teaches aviation business courses using the knowledge he gained as a

businessman in the Miami area. Dan, wife Gail, and the five little Carson's live in a waterfront residence in Indialantic.

**Sandra E. Lawson**, is the new administrative secretary in the Office of the President. A native of Roanoke, Va., she has been in Florida for almost two years. Prior to joining **F.I.T.**, she was a "Grey Lady" in the American Red **Cross** "Apple Corp." Before moving to Florida, she worked for Virginia's Health and Welfare offices for more than six years. Sandra was **also** a member of the Shenandoah Chapter, **American** Business Women's Association for five years and served on its executive board for two. In her spare time, she taught office skills with a **federal/state** funded social service **program** and **taught** yoga at the **YWCA**.



Sandra Lawson

---

Published by  
Public Relations  
Department

# Car Wash!

By Pam Smith

Lambda Chi Alpha, an F.I.T. fraternity, raised over \$900 during a World Record Attempt Marathon Car Wash on October 8-11. The attempt was staged to benefit the Happy Landings Boy's Ranch, which is a juvenile rehabilitation center located in South Brevard.

President Keuper **officially** opened the car wash with a **ribbon-cutting** ceremony. The car wash was held at the New Haven Chevron **Service** Station at the intersection of Babcock Street and New Haven Avenue.

A new world record had been set by 4 pm. on Sunday, Oct. 11. In all, **777 cars** had been washed over a period of **72 hours** by the Lambda Chi Alpha brothers and some of their friends. The fraternity will **also seek** recognition of a one-day wash record of **211 vehicles**.

Lambda Chi Alpha would like to express their deep appreciation and thanks to members of the university **community who** made the car wash a huge **success**.



## Snip

President Keuper **sees** **scissors** to **officially** open the Lambda Chi Alpha Marathon **Car** Wash, as fraternity member Dave **Kniskern** helps **start** the event.

# Sebastian Inlet Study Target

The **grass** beds and fish life of Sebastian Inlet on Florida's East Coast are the targets of a research project recently **assigned** graduate student Mark Peterson by the elected caretakers of the waterway.

Peterson, majoring in **bio-environmental** oceanography in the Department of Oceanography and **Ocean** Engineering, is to conduct the work on behalf of the **Sebastian** Inlet Tax **District** Commission.

The inlet commission has awarded F.I.T. **\$3,000** to pay for Peterson's study, that amount matched by **\$3,000** from the university.

A special target of **Peterson's** work will be the **Gobiid** fish, a bottom **feeding** fish that frequents grass beds **along** the inlet's sides. The fish, **also** known as "gobies," grow **only** to a **half-inch** to an inch in **length**. But they are considered important food sources for game **fish**.

The inlet, located about 20 miles south of Melbourne, **connects** the Indian River with the Atlantic Ocean. The **manmade** waterway is the **site** of Florida's busiest

state **recreation** area, and is one of the state's most popular fishing spots.

Mark Peterson



"What I'm trying to show is the importance of these fish in the entire food web of the area," Peterson said. "The gobies are fed on by many higher **classes** of fish," he explained. But scientific information on the gobies is **scarce**.

Peterson, a West Melbourne resident, will conduct the research in conjunction with work on his master's **degree** thesis. He is being **assisted** in his graduate work by Dr. **Terrell** Roberta, F.I.T. **assistant** professor of oceanography, and Dr. **R. Grant** Gilmore, an adjunct faculty member who works with the Harbour Branch Foundation at Fort Pierce.

# Computers Move

By Ramona Aroica

A new location for the Academic Computer Center and new staff members, as well as expectations of a new computer in 1981, have been announced by **Richard Enstice**, director of **academic services**.

The center **has** been relocated to the classroom quadrangle. Room **Q-7** is a student lab with terminals, and Location of the keypunch room, along with offering access to the graphics room. **Q-8** is the machine room, and **Q-5** contains the faculty terminal room and staff offices.

The center provides a variety of computer services **for** students, class projects and faculty-student research. explained Dee Dee Pannell, **director** of the center (and formerly of Student Affairs).

Students take a **seat** in the center and actually "interact" with a "DEC" computer. It is accessed by **15** terminals located in the lab and in three departments on campus.

In addition, the center supports an IBM "370/125". The system is available for students to drop off "batch" cards. To accommodate the **batch** jobs, the **facility** maintains a keypunch **room** with **5** IBM keypunches. The graphics **room** has two terminals.

Staffing the center in addition to the director are Mike **Newell**, scientific analyst, and Kevin Hester, **operations**.

**Newell** is available by appointment as a consultant. He received his master's degree in computer science from F.I.T. in June.

The computer center is open **from** 8 a.m. to 10 p.m. on weekdays. Pannell said. "Around the time for **mid-quarter** exams the hours will be extended," she explained.

# Don Stophlet Dies

Donald V. **Stophlet**, for more than a **decade** the Vice **President** for **Development** **Affairs**, died of a heart **attack** **Sept. 26** at the Jensen **Beach** campus.

Stophlet, **61**, sewed on the Melbourne campus for 12 years before **shifting** his work to Jensen **Beach** in late **1979**. He assisted Dean E. E. **Tealey**, executive **director** of the Jensen **Beach** campus, in drawing up plans for the growth of F.I.T. programs there over the **next 10** years.

# Enrollment Figures Show Increases

Continued **from** Page One and Humanities, and Professional Psychology was stable at **1,589**. **Part-time** undergraduates, however, increased by **39** percent, to **335**.

**At the School of Aeronautics, it was** the number of **fulltime** students that jumped, rising by nine percent to **751**. Part-timers, on the other hand, dropped **15 percent** to a **rwter** of **33**.

The number of graduate students at Melbourne dipped slightly to **283** in the **fulltime** category, but **part-time** seekers of master's and doctor's degrees jumped a dramatic **21** percent to **794** students.

The **most rapid** growth in university enrollment was **marked** by **Off-Campus** Programs, where a **gain** of **387** students to an enrollment of **1,192** figured to a whopping **48** percent **increase**.

The program **features** **graduate-level** education centers at military bases in eight states, as well as **sites** to serve industry and government in Florida.

At the Jensen Beach campus, site of the university's School of Applied **Technology**, the number of **fulltime** undergraduate students declined by nine percent to **591**. The number of **part-time** students, however, increased eight **percent** to **106**.

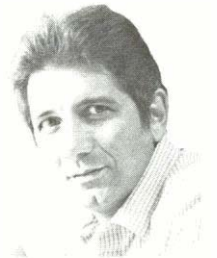
# Hadjiligiou Is Appointed

The appointment of Dr. John Hadjiligiou as acting head of the departments of electrical and computer engineering has been announced by Dr. Andrew W. Revay Jr., dean of the School of Science and Engineering.

Dr. Revay said Dr. Hadjiligiou, a professor of electrical and computer engineering who joined the F.I.T. faculty in 1970, has agreed to serve in the post for the current academic year.

"John's leadership, dedication, and extensive experience will serve the department well," Dr. Revay said of the appointment

Dr. John  
Hadjiligiou



Dr. Hadjiligiou joined the university after receiving the Ph.D. in electrical engineering from Polytechnic Institute of Brooklyn. He also earned his bachelor's and master's degrees from Polytechnic Institute.

An active researcher, Dr. Hadjiligiou spent 10 weeks during the past summer working on a military research project at Williams AFB, Arizona.

## Grant to MRI

Dr. Arvind M. Dhople of The Medical Research Institute has been awarded a grant of \$15,000 from the Initiative Fund of the Director of the Special Program for Research and Training in Tropical Diseases of World Health Organization.

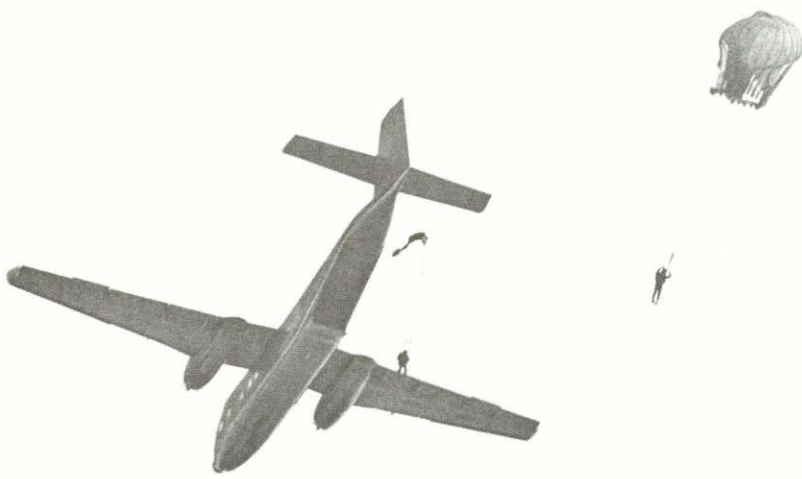
The fund is used exclusively to start new research programs to control leprosy, malaria, filariasis, schistosomiasis, trypanosomiasis, and leishmaniasis.

Dr. Dhople is developing a bioluminescent technique for the diagnosis of leprosy. The technique involves the measurement of adenosine triphosphate (ATP), which is a prime energy source in all living organisms.

Currently he is working with Dr. Eleanor E. Storrs in applying the technique to armadillos infected with human leprosy.

In the near future Dr. Dhople will initiate similar studies on human patients in collaboration with leprologists from Argentinian, Brazil, and India who have agreed to participate in the program.

The technique will make it possible for the first time to measure rapidly the effectiveness of drugs in killing leprosy bacteria in armadillos and human patients. Dr. Dhople's work is also being supported by the Victor Heiser Foundation.



## Jump

A number of F.I.T. students recently hit the silk instead of the books as several universities joined an Army ROTC airborne exercise at Valkaria Airport. A rarity in the ROTC program, the parachuting exercise was held in conjunction with a regional leadership training program hosted by F.I.T. at the South Brevud airport.

Photos by  
Bob Goldberg and Natoka

