

The Pelican

A Newsletter for the F.I.T. Family

VOLUME XII

OCTOBER, 1980

NUMBER 10

Navy Salutes F.I.T.

The Navy recently let the world **know** F.I.T. graduates are making their mark in one of the service's most sophisticated and demanding **programs**. The **following** is from a news release issued by the Navy on Sept. 17.

Florida Institute of Technology is the state's leader in placing its graduates in the Navy's Nuclear Officer Program.

For the past 12 months, F.I.T. has contributed nearly 30 percent of the overall Florida total to that highly competitive military program, although the school comprises less than 5 percent of the state's college population.

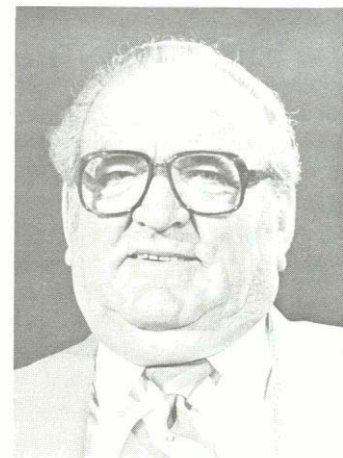
According to Lt. A. P. Scontras, officer program representative for Navy Recruiting District, Jacksonville, "The quality of **F.I.T.'s** curriculum makes their graduates a prime source of candidates."

Scontras added, "Anyone with a science background, from college junior to age 28 is eligible, but **F.I.T.'s** record in placing young men and women is outstanding."

Prospects are interviewed in Washington, D.C. by Admiral **Rickover** and only the most outstanding people are selected for the Nuclear Program.

The program has an unblemished record which is directly attributable to the stringent qualifications and educational background that is demanded of applicants.

"**F.I.T.'s** training and education is the reason for their graduates' great success," Scontras concluded.



Donald Shephard

Dr. Shephard

Dr. Donald L. Shephard, the Michigan businessman who served as a member of the Board of **Trustees**, died September 7 at Port Huron, **Mich.**, after a brief **illness**.

Dr. Shephard, a resident of Port Huron and of **Delray Beach, Fla.**, was founder and president of Empire Tool Company at Memphis, **Mich.**

Dr. Shephard **was** elected to the Board of Trustees in November of **1979**. Earlier that year he **was** awarded an honorary **doctor of science** degree by the university. On the **occasion**, F.I.T. President Jerome P. Keuper cited the self-made **business** executive as "a beacon **proclaiming** the value of our American **free** enterprise system."

Starting the **Empire** Tool Company in 1939 with an investment of **\$385**, the Detroit native led the business to an international stature.

Dr. Shephard was a strong supporter of **the** university. The "Donald L. Shephard Old Car Museum" on the F.I.T. **campus houses** vintage **vehicles** donated by Dr. Shephard.

Dr. Shephard is survived by his wife, Helen, and seven children. He was an honorary member of Lions Clubs International since 1949, was a member of **the** Memphis (**Mich.**) Lions Club, and a **Shriner** of the **Detroit** Moslem Temple.

Manley Heads Management Science

The appointment of Dr. T. Roger **Manley** as head of the Management Science Department has been announced by Dr. James T. **Stoms**, dean of the School of Management and Humanities.

"In assuming the leadership of the Management Science Department, Dr. **Manley** plans to emphasize academic excellence and to build a strong research capability," **Stoms** said.

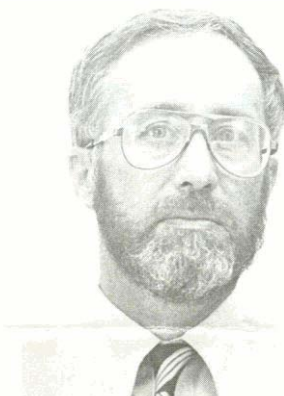
"In keeping with the orientation of industry in the area, the focus of management research at F.I.T. will be aimed at the effective management of high technology enterprises," the dean said.

Manley is a professor of management and organizational psychology, is the author of more than 50 publications, and has delivered more than 50 research presentations to fellow **professionals**.

A **member** of the F.I.T. **faculty** since **1979**, **Manley** **previously** **taught** at the university **& i 1967 t i 1969**. In **1968** and **1969**, he was **acting** head of the Management Science Department.

After receiving his undergraduate degree in engineering from the U.S. Naval Academy, **Manley** earned a master's degree in research and development management from **Rensselaer** Polytechnic Institute at Troy, N.Y. He subsequently was awarded the **Ph.D.** in management from **Rensselaer**.

Prior to rejoining F.I.T., **Manley** was a tenured professor at the Air **Force** Institute of Technology in Dayton, Ohio.



Dr. Roger Manley

Published by
Public Relations
Department

Campus Notes

Mrs. **Margot A. Haberhern**, assistant professor of English, successfully defended her doctoral dissertation at Florida State University recently, and will be awarded the **Ph.D.** in humanities at the school's December commencement. Her dissertation is titled, "Imitation With a Twist: The Literature of Exhaustion and Beyond." A member of the humanities faculty since 1968, Dr. Haberhern has studied at the Cleveland Institute of Art, holds a bachelor's degree from the University of Central Florida, and a master's degree from **Stetson** University.

Dr. **Maria Eugenia de Bernes** of the Laboratory for Immunological Investigations of the Secretariat of Health and Welfare of Mexico visited Dr. **Eleanor Storrs** at the **Medical** Research Institute recently. Her trip was sponsored by the Pan American Health Organization. During the visit she was shown techniques for bleeding and **necropsy** of armadillos by Dr. **Arvind Dhople** and Joseph **Ziegler** of **MRI**. She will use the techniques in her studies of natural microbacterial diseases of wild armadillos in Mexico.

Dr. Storrs was also recently visited by Dr. **P.R. Mahadevan**, Director of Experimental Biology and Therapy at the Foundation for Medical Research in Bombay, India. Dr. Mahadevan spoke during his visit at a public meeting staged by **F.I.T.'s** Sigma Xi scientific fraternity.

Dr. **T. Roger Manley** of Management Science recently presented a paper on "Alcohol and Federal Employees: Research Findings," at the annual conference of the Academy of Management in Detroit. He also made a presentation on "Research on Alcoholism" to a meeting of combined chapters of **Al-Anon** and **Alcoholics Anonymous** in Melbourne.

Bob Heidinger, director of admissions and special services, recently attended an Admissions Workshop in Atlanta, and returned with ideas now being incorporated in **F.I.T.** operations. He was also elected secretary for **1980-81** of the Florida Cooperative Education Association during a meeting in Panama City.

Dr. **John C. Hozier**, assistant professor of Biological Sciences, recently presented a lecture to the research staff of the Environmental Protection Agency at Research Triangle, N.C. He described research on the effects of chemical mutagens on human chromosomes.

A number of biological photographs by Dr. Kerry B. Clark, associate professor of Biological Sciences, have appeared in a new children's book, entitled "The Wonders of Snails and Slugs." The book was written by **M. K. Jacobsen** and **D. R. Franz**.

Dr. Norbert W. **O'Hara**, head of Oceanography and Ocean Engineering,

spent five weeks in Europe during the summer. He presented two papers before the 26th International Geological Congress in Paris, and visited several oceanographic institutes in Europe and Scandinavia. He helped arrange an international geophysical symposium to be held next August in Oslo to investigate the offshore continental margins. Dr. **O'Hara** also met with members of the Swedish National Academy of Science to promote developmental programs relating to ocean thermal energy conversion (**OTEC**) in the Caribbean.

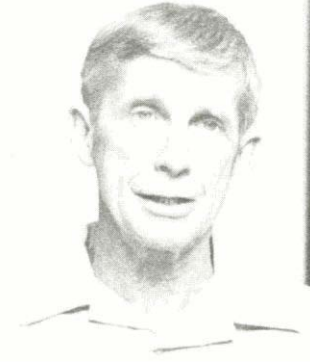


Dr. **Frank Stasa** of **Mechanical Engineering** took visitors from the **Jensen Beach Campus** aloft for a look at solar energy experiments atop the research platform at the **Frueauff Energy Building**.

Dr. **Richard Pierce**, associate professor of **oceanography**, and three oceanography graduate students — **Robert Fricke**, **Scott Friedersdorff** and **Kurt Van Gelder**, recently completed a water and sediment sampling trip in Mississippi. The sampling trip was part of a National Science Foundation study to determine the long-term fate of the **toxic** organic substance **pentachlorophenol** which caused a massive fish kill in a Mississippi lake.

Dr. Pierce and Dr. **John Trefry** of Oceanography and Ocean Engineering have been awarded a \$29,400 contract by the Bureau of Land Management to investigate the chemical composition of **surficial** (uppermost) sediments from the West Florida shelf. Dr. **Trefry** will investigate the sediment trace metal **distribution**, and Dr. Pierce will focus on **petroleum hydrocarbons**. The work is part of a continuing effort by the **ELM** to establish a well-defined environmental baseline in potential oil lease areas of the **outer continental shelf**.

Dr. **Trefry** served as chief scientist aboard the University of Miami research vessel **Columbus Iselin** during a recent research cruise across the Gulf



Herb **McChrystal**

McChrystal Heads Continuing Education

Maj. Gen. H. J. "Herb" **McChrystal** (U.S. Army, retired) has joined the university as director of the Continuing Education Division.

Bringing to the job far-ranging experience that includes nearly three decades of military service, **McChrystal** said an initial goal will be development of continuing education programs "that can be the **product** of the knowledge and experience of **faculty** members."

A 1945 graduate of the Military Academy, **McChrystal** began an Army career that was to include serving as an infantry commander up to brigade level and as a division chief of staff. His varied assignments included three years of service with the U.S. State Department, and graduate-level studies in international relations at Georgetown University.

He is a graduate of the Command and General Staff College, the National Defense College, and the State Department Senior Seminar. After retirement from the Army in 1974, **McChrystal** served as a consultant to the RAND Corporation, specializing in NATO affairs.

After moving to Florida in 1977, **McChrystal's** activities included both being an **F.I.T.** graduate student and serving as an adjunct faculty member.

Other **F.I.T.** oceanographers participating in the trip were chemical technicians **Robert Trocine** and Brad Weicbert, and graduate students **Frank Saksa**, **Mike Sullivan** and **Tom Vetter**.

Traveling close on the heels of Hurricane **Allen**, the group aimed their studies at the **Texas** Flower Gardens reef community. Hydrographic data was taken, and water, suspended particulates, plankton and sediment were collected. The cruise was the third this year as part of a federally-funded study by Drs. Pierce and Trefry to identify potential impacts of oil and gas drilling operations on the sensitive reef area in the northwest Gulf.

Welcome To F.I.T.

AERONAUTICS

New adjunct faculty members in the school of Aeronautics include Dr. **Jack D. Bergstresser** and **Richard K. Easley**.

Dr. Bergstresser, who will teach the Physiology of Flight course, is an FAA medical examiner and an osteopathic physician and surgeon.

Easley, who will instruct in three courses, is an attorney and former airline pilot. Formerly affiliated with **Rollins** College, he has also served as legal counsel for an airline company. He received his M.S. in procurement and contract management from F.I.T. He and his wife live in Cocoa Beach.

CHEMISTRY

Dr. **Ronald G. Barile** has joined the Department of Chemistry and Chemical Engineering as professor of chemical engineering and program chairman.

Dr. Barile comes to F.I.T. from Purdue University, where he was a member of the chemical engineering faculty for 14 years. He received his B.S. from the University of Illinois, his M.S. from Northwestern University, and the **Ph.D.** from Syracuse University. Interested in bio-medical engineering, Dr. Barile has done extensive research on **artificial** kidneys. He has also worked on transfer of appropriate technologies to underdeveloped nations.

Dr. Barile and his family now reside in Melbourne.

Dr. **W. Brooks Bigelow** has joined the department as a visiting assistant professor of chemistry. Dr. Bigelow's field of specialization is physical organic chemistry. His graduate work at New Mexico State University involved a study of the reductive coupling of benzaldehyde.

At F.I.T., Dr. **Bigelow** will be responsible for the sophomore organic chemistry course, a course he has taught both at the University of Iowa and the University of Arkansas.

MECHANICAL ENGINEERING

Palmer C. Stiles, **P.E.**, has joined the Mechanical Engineering Department as an assistant professor. He received his B.S. from the University of Wisconsin, and his M.S. from the University of Illinois.

Stiles brings to the university **12** years of Air Force experience in the areas of design engineering and space vehicle launch operations. His primary area of current research interest is in computer graphics and computer-aided design.

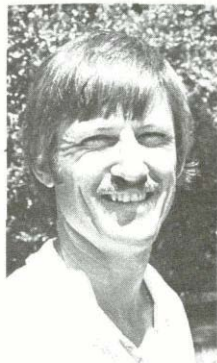
STUDENT AFFAIRS

Cissy Petty, recent recipient of an M.S. in higher education from Florida State University, has been appointed coordinator of student activities and organizations. Holder of a B.S. in criminology from FSU, the former honor student (4.0 grade point average) was active in student government and sorority leadership.

"Don't let your studies interfere with your education," she quotes Woodrow Wilson as pointing out. "I strongly believe in the development of the 'whole' student, intellectually, as well as spiritually, physically and emotionally." The new coordinator is a beach enthusiast who resides in Indentic.



Petty



Dickens

ATHELETICS

Mike Dickens, tennis professional for the City of Melbourne, has been named the university's varsity tennis coach. A Melbourne native, he received a B.A. from Catawba College (**N.C.**) in physical education.

Dickens is a member of the U.S. Professional Tennis Association, and president of the Brevard Little Team Tennis program for youth. He is also a member of the Melbourne Optimist Club.

MILITARY SCIENCE

Lt. Col. Donald **Cleaver** has been assigned to the Military Science Department as professor, after service on the Army staff in Washington, D.C. He received his B.S. from Eastern Kentucky University, and M.B.A. from Northwest Missouri State University.

Capt. **William Coleman** has joined the department as an instructor. Previously he served as a company commander at Fort Polk, La. He received his B.A. from North Georgia College, and M.A. from Georgia State University.

Capt. Michael S. **Pohler** is also serving as instructor. He has served as a company commander at **Fort Bragg, N.C.**, and as an advisor in Vietnam. He received his B.A. from the University of Georgia, and M.A. from Webster College.

Capt. James Kebisek has been assigned as an instructor at the **Jensen** Beach Campus. He has served as construction engineer on Eniwetak Atoll in the Marshall Islands, and as

commander of a topographic engineer mapping company at Ft. Shafter, Hawaii. He received his B.S. in geological science from the University of Wisconsin.

DEVELOPMENT

Melanie Delman has joined the Public Relations Department as graphic arts coordinator. She received her bachelor's degree in advertising and marketing from the University of Florida, graduating with high honors and nominated for Outstanding Female Graduate. She is a member of the Kappa Tau Alpha journalism honor society at UF.

Prior to joining F.I.T., she was direct mail production coordinator for **Davison's** Department Store in Atlanta, a division of Macy's in New York City. She is a Melbourne native, and her husband, Dennis, is an electrical engineer with Harris **Corp.'s** Government Systems Division.

Rachele Boss, a 20-year Florida resident with a penchant for sailing, has joined Public Relations as compositor. She previously worked for a Melbourne printing firm, handling type-setting and other production work.

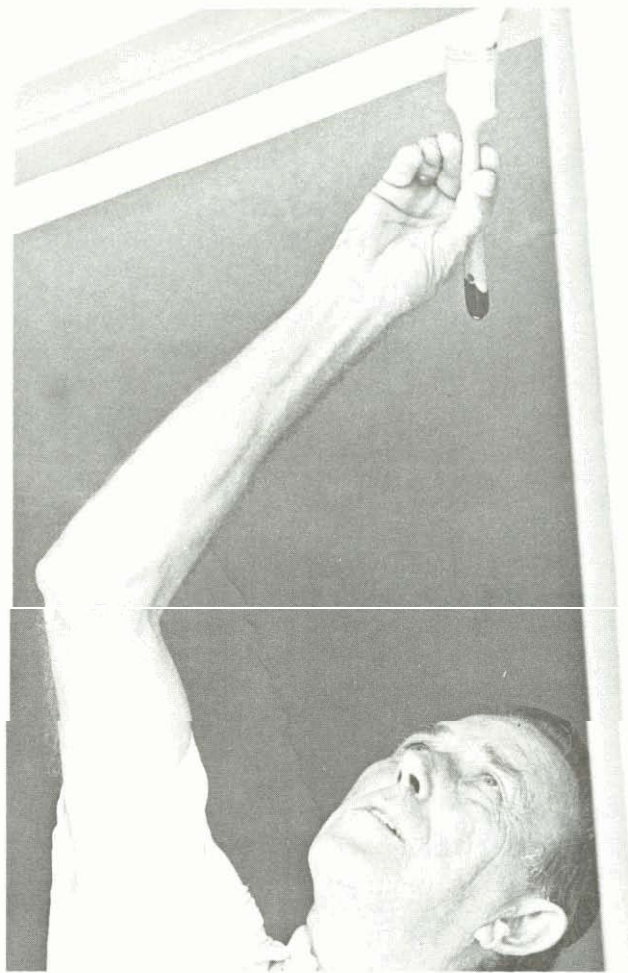
The Illinois native's husband, Jerry, is on the executive staff at Kennedy Space Center. The **Ross** family includes an 11-year-old son. Sailing aboard the 30-foot "Sleighride" is a weekend vocation for the family, members of both the Melbourne Yacht Club and the East Coast Cruising Association.

Gloria Douglas, executive secretary to the vice president for development affairs, came to the university "after nine cold winters in Wadsworth, Ohio." Formerly a Florida resident, she was both a stewardess and office worker for Eastern Airlines. In Akron, Ohio, subsequent work for a marketing firm was made more interesting by office space in the former Russell Firestone Mansion.

Leisuretime activities include creative projects, gourmet cooking, biking, tennis, and sporting events with her 10-year-old son, Adam. She credits her happiness at F.I.T. to "friendly people . . . relaxed atmosphere and beautiful surroundings."

Janice Tubell, after teaching elementary school on Andros Island in the Bahamas for four years, is serving as secretary to the assistant to the development vice president. In the Bahamas, her husband, **Wally**, was base manager for the Navy's international submarine testing center. She has also served as an executive secretary with Pan Am, and as a secretary for RCA on Andros Island.

Among the **Tubell's** three children is a son engaged in freshman studies at F.I.T., and the recent recipient of an ROTC scholarship. Two daughters are aged 15 and 17.



Getting Ready

Be prepared is a motto that works for the Boy Scouts, and was kept in mind by university staff and faculty as the start of fall classes approached. Above, Virginia Fischer adds to the Bookstore information available at a glance. At right, Conard Hendrikson does his part for a contract firm painting new student apartments. Below at left, Bob Rowe does some admissions office decorating to please the incoming eyes, and below at center, Karin Koslowski checks Bookstore inventories. Below at right, Holmes Beausang tries to match students with dorm space.



At left, Scharle Rotunda of Professional Food Management uses a meat cutter for her part in welcoming arriving students. Below, the mowing keeps going even though the fall has arrived.

