

2024/2025 STUDENT RESOURCE GUIDE



ACADEMIC CALENDAR: FALL 2024

Aug. 12	Tuition and fees due for fall semester 2024
Aug. 19	CLASSES BEGIN (Monday)
Aug. 19	Last day for Melbourne campus returning students to register for fall semester 2024 without late registration fee
Aug. 28	Last day to register or add a class, or drop a class with full tuition refund and without receiving a grade of W (Wednesday, noon)
Sept. 2	Holiday (Labor Day) (NO CLASSES)
Sept. 6	Re-petition deadline for fall semester 2024 (for students who had petitioned for spring/summer semester 2024)
Sept. 6	Last day to petition to graduate for spring semester 2025 without a late fee
Sept. 27	Termination of F-1 immigration status deadline
Oct. 4	Midterm grading opens for faculty to enter midterm grades, 0000-, 1000- and 2000-level courses

Oct. 14	Holiday (NO CLASSES)
Oct. 14–15	Fall Break (NO CLASSES)
Oct. 25	Last day to withdraw from a class with a final grade of W
Nov. 3	Registration for Melbourne campus spring semester 2025 begins (8 p.m.)
Nov. 8	Registration for education centers spring semester 2025 begins (8 p.m.)
Nov. 11	Holiday (Monday, Veterans Day) (NO CLASSES)
Nov. 27–29	Holiday (Thanksgiving) (NO CLASSES)
Dec. 2	Last day to successfully complete graduate-level defense and examination for fall 2024 commencement
Dec. 6	Last day of classes
Dec. 9	Last day to submit approved copies of thesis or dissertation to the Office of Graduate Programs
Dec. 9–13	FINAL EXAMS
Dec. 14	Fall commencement exercises

ACADEMIC CALENDAR: SPRING 2025

Jan. 6	Tuition and fees due for spring semester 2025
Jan. 13	CLASSES BEGIN (Monday)
Jan. 13	Last day for returning students to register for spring 2025 without a late registration fee
Jan. 20	Holiday (Dr. Martin Luther King Jr. Day) (NO CLASSES)
Jan. 22	Last day to register, add a class or drop a class with full tuition refund and without receiving a grade of W (Wednesday, noon)
Jan. 24	Re-petition deadline for spring semester 2025 (for students who had petitioned for fall semester 2024)
Jan. 31	Last day to petition to graduate for summer term 2025 without a late fee
Feb. 3	Registration for Melbourne campus and Education Centers summer term 2025 begins
Feb. 21	Termination of F-1 immigration status deadline

Feb. 28	Midterm grading opens for faculty to enter midterm grades, 0000-, 1000- and 2000-level courses
March 14	Last day to petition to graduate for fall semester 2025 without a late fee
March 17–21	Spring Break (NO CLASSES)
March 28	Last day to withdraw from a class with a final grade of W
April 6	Registration for Melbourne campus and Education Centers fall semester 2025 begins (8 pm, staggered registration)
April 28	Last day to successfully complete graduate-level defense and examination for spring 2025 commencement
April 30	Last day of classes
May 1–2	Study days (NO CLASSES)
May 5	Last day to submit approved copies of thesis or dissertation to the Office of Graduate Programs
May 5–9	FINAL EXAMS
May 10	Spring commencement exercises



FLORIDA'S **STEM** UNIVERSITY*

Florida Institute of Technology has become known worldwide as a premier technological university with a sincere interest in each and every student who attends.

The university has been built by dedicated, expert faculty and offers the ultimate learning experience available through individual attention both in the classroom and in laboratories.

The university was founded during the space race by visionary physicist Jerome P. Keuper, Ph.D., to provide more opportunities for scholastic achievement to the brilliant minds working in the space program. Today, Florida Tech continues to emphasize humanity's drive for discovery and knowledge. Since its founding in 1958, more than 60,000 students have earned degrees at Florida Tech.

Student Life wishes you the best in all your endeavours at Florida Tech.



TABLE OF CONTENTS

Academic Calendar: Fall 2024 2

Academic Calendar: Spring 2025..... 2

Get Involved! 5

Clubs and Organizations 5

Student Government Association (SGA) 7

Campus Activities Board 8

Greek Life 9

Volunteer at Florida Tech and Make A Difference 9

Recreation 10

Orientation Team 10

Residence Life 11

International Students & Scholar Services (ISSS) 12

Study Abroad 12

Florida Tech Athletics..... 13

Esports..... 14

Clemente Center for Sports and Recreation 15

All Faiths Center 16

Office of Student Advising 17

Student Success and Support Center..... 18

Peer Tutoring, Supplemental Instruction and Exam Reviews 18

Office for Accessibility Resources 18

Career Services..... 19

Student Health and Wellness 21

L3Harris Student Design Center 22

Student Services..... 23

Evans Library 24

Campus Dining..... 27

Title IX and Equal Opportunity 30

Campus Security 32

Information Technology 35

Student Financial Assistance..... 36

Office of the Registrar 36

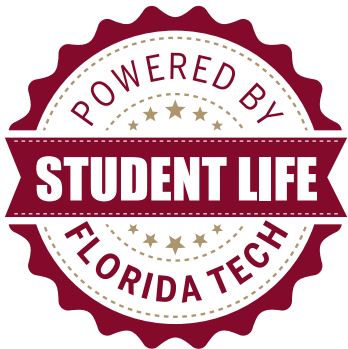
Hurricane Season 37

Important Information 40

Academic Expectations..... 41

GET INVOLVED!

Being a member of a student organization enriches your years at Florida Tech in many ways. The good friends and good times help you deal with the demands of college life and give you opportunities to explore new interests, develop skills, enhance your academic program and have an impact on the college community. A college education involves learning about a wide range of subjects, but not all of your learning will be done in labs and lectures. Other activities—such as attending a musical production in Gleason Performing Arts Center or laughing the night away with a bingo night sponsored by the Campus Activities Board—provide the opportunities to learn things you won't study in classrooms. Joining a club or being elected to Student Government Association can also provide important educational experiences. If you participate, Florida Tech will soon feel like home, and your education will be more diverse.



Which student organization is right for you? With over 130 clubs and organizations on campus, you may wonder how to find the right one for you. Ask yourself:

- What am I looking for in an organization?
- Do I primarily want to make new friends?
- Do I want to explore something new?
- Should I be in a group that relates to my major or career choice?
- Would I rather get involved in something outside of my major?
- Do I want to be of service to the campus or community?
- How much time can I dedicate to the group?
- What role in the group (president, treasurer or a nonelected position) would I like to have?
- Are there dues or other fees?

Can't find the club you're looking for? No problem! You can start your own club by contacting Student Life at studentlife@fit.edu.

Club and organization contact information can be found at: floridatech.campuslabs.com/engage

CLUBS AND ORGANIZATIONS

Active Minds	American Meteorological Society	Brazilian Student Association
Alpha Eta Mu Beta National Biomedical Engineering Honor Society	American Society of Mechanical Engineers	Caribbean Student Association
ALPA Ace	Anime Club	Chi Epsilon-Civil Engineering Honor Society
Alpha Eta Rho	Art Club	Chinese Student Scholarship Association
American Chemical Society Student Affiliates	Association for Computing Machinery	College Players
American Institute of Aeronautics and Astronautics	Astrobiological Research and Education Society	Collegiate Aviation Business Executives
American Institute of Chemical Engineers	Behavior Analysis Student Association	Competitive Programming at Florida Institute of Technology
American Institute of Steel Construction	Biomedical Engineering Society Student Chapter	Crimson
	Black Student Union	Cru
	Brain Exercise Initiative	Drone Club

Ethos Community
Garden Club

First Love Church Melbourne

FITSEC

FITV

Forensic Psychology and
Science Society

Future Business Leaders of
America Collegiate

Game Development Club

Graduate Student
Organization

HOPE Club

India Students
Association-Sanskriti

Industrial/Organizational
Psychology

Institute of Electrical and
Electronics Engineers

International Society of Air
Safety Investigators

InterVarsity Christian
Fellowship

Kaleidoscope

Keuper Palm
Botanical Society

Latin American Student
Association

Lost Musician's Society

Marine Biological Society

Mishpacha

National Gay Pilot
Association

National Society of Black
Engineers

Newman Club

Omani Student Association

Panther Radio

Panther Robotics

Per Aspersions Ad Astra

Phi Kappa Phi

Philosophy Club

Prelaw Society

Pre-Med Club

Pre-Veterinary Medicine Club

Rainbow Alliance

Rescue Squad

Residence Halls Association

Rocketry Club

Rotaract Club

Science and Engineering
Graduate Research Talks

Society for Human Resource
Management (SHRM),
Florida Tech

Society for Science Fiction
and Fantasy

Society for Women in
Marine Science

Society of Automotive
Engineers

Society of Hispanic
Professional Engineers

Society of Ocean Engineers

Society of Women Engineers

SQUAMISH

Student Athlete Advisory
Committee

Student Organization for
Sustainability Action

Swing Dance

Tau Beta Pi

Tri-Beta

Veteran's Club

Women in Aerospace
Engineering

Women in Aviation

INVOLVEMENT BEGINS



with
ENGAGE FLORIDA TECH

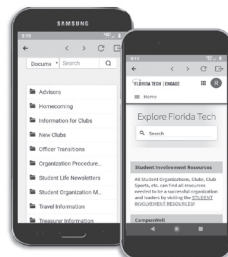
EXPLORE

the platform that Florida Tech's clubs, organizations, departments and offices use to connect with Panthers.



ENGAGE

in the various events happening daily on campus and even in the local community.



LEAD

your way to success through leadership positions.

Florida Tech
Student Life
floridatech.edu/studentlife



@floridatech_studentlife

FLORIDA TECH
FLORIDA'S STEM UNIVERSITY

STUDENT GOVERNMENT ASSOCIATION (SGA)

IGFB @fitechsga

The Florida Tech SGA is a group of elected or appointed student representatives that make up the student body senate, judicial board, executive cabinet, and executive board, who meet regularly to discuss matters of importance and general concerns or suggestions brought forward by the student body. The SGA serves as a liaison between the student body and the faculty, staff, and administration of Florida Tech through presenting proposed programs, activities, initiatives, and to discuss issues or concerns affecting the student body. The SGA aims to improve student life and contribute to continuing the success of the university. The Florida Tech SGA is committed to the representation and advocacy of all students.



Some of the additions to campus made by the SGA over the last academic year include:

- Continued Evans Hall renovations to improve quality of student common areas and club offices.
- Brought a new initiative to provide students free printing in the Evans Library.
- Created a new food pantry and professional attire closet to provide food security and resources to students who need it.
- Funded many student activities and programs, such as Homecoming, the transition of 8 club sports to athletics, CAB events, Panther Media Group and more.

If you have any questions, concerns or suggestions, please feel free to contact the SGA president.



Gabrielle Fox, President
gfox2022@my.fit.edu



Max Miller, Treasurer
max2022@my.fit.edu



Erik Laari, Vice President
elaari2022@my.fit.edu



Kaitlyn Crum, Secretary
kcrum2022@my.fit.edu

CAMPUS ACTIVITIES BOARD

@floridatechcab

The Campus Activities Board (CAB) is a student-run programming board that hosts a variety of campuswide events throughout the school year that promote a sense of community at Florida Tech while upholding many campus traditions. CAB offers trivia competitions, bingo, dance parties and food trucks, among many other fun programs and events. CAB events are always open to the entire student body and their families.

HOW DO I GET INVOLVED?

The Campus Activities Board welcomes all students interested in getting involved in the board. CAB serves as a committee under the Student Life office and seeks members every year, including new students. CAB meetings are Tuesdays at 8 p.m. in the second floor lounge of the Denius Student Center. Follow CAB on Instagram for more information: @floridatechcab. Follow the Engage portal to see all of the activities and events planned for this year.



Fraternities and sororities at Florida Tech have a rich tradition of fostering student involvement and development. These social organizations were founded on the ideals of leadership, scholarship, service and friendship. Fraternities and sororities assist in the development of students by:

- Developing leadership skills
- Building lifelong bonds and connections
- Growing social skills
- Offering career networking opportunities
- Providing education on social issues
- Organizing community service events
- Fostering a successful transition into college life
- Extending academic support
- Enhancing critical thinking skills



And most importantly providing fun and entertainment!

Please visit floridatech.edu/greeklife for more information.

Fraternities:

- Alpha Tau Omega
- Chi Phi
- Delta Tau Delta
- Lambda Chi Alpha

- Pi Kappa Alpha
- Pi Lambda Phi
- Tau Kappa Epsilon
- Theta Xi (colony)

Sororities:

- Alpha Phi
- Gamma Phi Beta
- Phi Sigma Sigma

VOLUNTEER AT FLORIDA TECH AND MAKE A DIFFERENCE

The Civic Engagement Initiative strongly believes that student development does not simply involve the procurement of knowledge and skills. Students become effective citizens of the world once they develop a wider perspective in their community. We strongly believe that for student growth to be meaningful it must include a commitment to one's community and a consistent pursuit of improving the lives of others through active participation in civic engagement efforts.



GET INVOLVED—BE PART OF THE SOLUTION

The habits of thoughtful and engaged students are best developed in college through involvement in the community. At Florida Tech, students become involved through service, which enhances the overall collegiate experience by providing students with experiential learning—a bridge between academic learning and the real world. Through service efforts, students also meet community leaders who are making a difference in their communities. In the process, students become a part of the solution by contributing their time and abilities to the greater good.

Florida Tech uses Florida Tech Engage for all civic engagement activities both on and off campus. Civic engagement tracking can be accessed through Florida Tech Engage. Students can find directions on how to report their service hours at floridatech.edu/civic-engagement/service-hour-reporting. All students have access through the use of their TRACKS ID. Students have the ability to not only view events, but also register for and submit volunteer hours once an activity is complete.

TYPES OF SERVICE

- In-person community service: A person using their abilities or skills to donate their time at an in-person activity or event
- Virtual community service: A person using their abilities or skills to donate their time through technological means as part of a virtual activity or event
- Fundraising: Raising money to ultimately donate to an organization in need either as a standalone activity or part of a larger event
- Donation of goods: Collecting tangible goods that are ultimately donated to an organization in need either as a standalone activity or part of a larger event

For more information, email civic@fit.edu, call 321-674-8824 or visit floridatech.edu/civic.

RECREATION

@fittechrec

The Office of Recreation offers experiences and opportunities that enrich the lives of the Florida Tech community through excellence in programs, sport, adventure, play and well-being. We are committed to advancing student success, developing leaders, fostering meaningful connections and encouraging lifelong healthy habits.

INTRAMURAL SPORTS

At Florida Tech, the student body is continuously active in intramural competition. This participation provides the physical benefits of exercise and develops the social values of companionship and sportsmanship.

- Flag football
- Basketball
- Soccer
- Volleyball
- Kickball
- More!



RECREATIONAL SPORTS

Looking to get involved in a competitive or recreational student-run physical activity? Rec Sports offers one of the most diverse selections of sports on campus. From fishing to surfing, we've got you covered!



STUDENT EMPLOYMENT OPPORTUNITIES

The Office of Recreation is committed to developing student employees by cultivating a community that fosters collaborative learning, self-discovery and inclusion. We believe employment at RecSports provides experiential learning that will uniquely prepare students for success for their lifelong journey.

- Intramural sports official
- Program assistant



Questions? Contact recreation@fit.edu.

ORIENTATION TEAM

Be proud to be a Panther at Florida Tech! Orientation is one of the most important, exciting and memorable events of a student's college experience! By attending the Orientation program here at Florida Tech, students already have one giant step toward a successful academic career. During this time, students will get to meet other students and make lifelong friends, meet professors and faculty, explore the amazing resources offered on campus and, most of all, have fun!

Want to be on the team? The Orientation team is made up of staff members within Student Life, lead staff coordinators and Panther Prep Leaders (PPLs). Panther Prep Leaders help implement Orientation programs, create an inclusive environment for new students and serve as role models at Florida Tech.

Applications to be on the Orientation team will be released on Florida Tech Engage. To be considered for the position, you must be a student in good standing with the university. For more information, call 321-674-6516 or email orientation@fit.edu.

RESIDENCE LIFE

@floridatechreslife

Residence Life oversees all aspects of the student residential living experience in the residence halls. Residence Life provides multiple programs each month to promote interaction and educational experiences for students. Students can also gain valuable leadership skills by getting involved in housing organizations such as Residence Hall Association. Resident assistants (RAs) coordinate and manage floors or buildings and are supervised by resident directors (RDs).

Note: Spring housing ends May 11.



WAYS RAs ARE RESOURCES FOR STUDENTS:

- Provide social and educational programs for students
- Show students how to complete a facilities service request
- Conduct roommate agreements and assist in the mediation of conflicts
- Facilitate interactions between residents
- Answer general questions about Florida Tech or give clarification on which offices handle certain processes
- During duty hours, RAs can also:
 - Assist students that are locked out of their rooms
 - Help enforce quiet hours
 - Communicate with security about maintenance or custodial issues
 - Be a listening ear
 - Patrol buildings and hallways to ensure that campus policies are being considered
 - Be a competitor in ping-pong or video games
 - Inform residents about upcoming programs and campus events

RA DUTY

Duty RAs patrol the buildings and hallways in each area to assist in ensuring that campus policies are being followed. Duty RAs are available to help everyone, so please ask us questions.

Duty Hours:

8 p.m. to midnight, Sunday–Thursday

9 p.m. to 1 a.m., Friday and Saturday

*RAs in Mary Star of the Sea and Panther Bay serve in an on-call capacity, meaning security can reach the RA through a work cellphone.

RA OFFICE LOCATIONS AND PHONE NUMBERS

- Columbia Village—Breezeway Office: 321-309-3001
- Roberts—Lobby Office: 321-674-8160
- Residence Quad—Evans Hall, 214: 321-309-4500
- Southgate Apartments—D101: 321-309-4632
- L3Harris Village—Farmer Hall 105: 321-309-4344
- Mary Star of the Sea—Lobby Office 100: 321-309-4840
- Panther Bay/Greek Village—Clubhouse: 321-674-7596



@floridatechreslife

INTERNATIONAL STUDENTS & SCHOLAR SERVICES (ISSS)

A home away from home, Florida Tech is an American university with a supportive environment.

International students excel academically with the added support of the ISSS Office and Enrollment Management. International students receive all the guidance they need to adapt to a new lifestyle at a top STEM university.

ISSS is dedicated to advancing Florida Tech's focus on student success and quality educational experiences by representing the needs and interests of our educational community and providing support services (travel, employment, immigration compliance) for all international students, faculty, scholars, staff and their dependents. The ISSS Office is located within L3Harris Commons, first floor, room 114A. The office is open Monday–Friday, 10 a.m.–4 p.m. when school is in session.

STUDY ABROAD

Several study abroad opportunities are available to students at Florida Tech through the Office of International Programs. Some of these diverse programs are discipline-specific, and others are open to all students in good academic standing. Reduced tuition and financial aid for Florida Tech study abroad programs make them more accessible to students.

STUDY ABROAD PROGRAMS

Florida Tech offers a variety of diverse international academic programs of study ranging from several weeks or months to a full year; however, if you wish to study on a non-Florida Tech study abroad program or at another international institution, please review the Study Abroad Policy and FAQs.

Some of the fun and exciting Florida Tech international opportunities (instruction in English, reduced Florida Tech tuition and Florida Tech credit) include:

- Florida Tech's Summer Study Abroad in Oxford, England, including optional trips to Ireland, England's Jurassic Coast and more.
- Georgia Tech Lorraine Program in France. Engineering courses are offered in English fall or spring. U.S. students only.
- Florida Tech International Summer Field Experiences for Biological Sciences: mbush@fit.edu (Ecuador); turingan@fit.edu (Puerto Rico)
- Study abroad for two weeks in Spain with the Florida Tech Bisk College of Business.

Study for a semester or a year in over 25 countries with AIFS, CEA, SFS. Search their sites for details and contact studyabroad@fit.edu for details on use of federal financial aid, registration, course approval and scholarships.

These are some of the interesting places our students have studied in previous years: New Zealand, China, Israel, Australia, Norway, France, United Kingdom, Belgium, Hungary, Spain, Italy, Africa, Costa Rica, Cuba, Galapagos Islands, Peru—just to name a few.

Join us for an unforgettable cross-cultural educational experience!

Visit floridatech.edu/study-abroad for more information.



FLORIDA TECH ATHLETICS

As an NCAA Division II school and member of the prestigious Sunshine State Conference, we have 15 intercollegiate sports teams. We have earned regional and conference titles in multiple sports and have earned numerous national awards, including the NCAA Top 30 Woman of the Year Savannah Brennan, Astronaut Scholar Karly Libendorfer and National Player of the Year Sjur Drechsler.



MEN'S

- Baseball
- Basketball
- Cross Country
- Lacrosse
- Rowing
- Soccer
- Swimming
- Indoor Track
- Outdoor Track

WOMEN'S

- Basketball
- Lacrosse
- Soccer
- Softball
- Swimming
- Volleyball

CLUB SPORTS

- Baseball
- Esports
- Ice Hockey
- Women's Rowing
- Soccer
- Spirit Squad
- Swimming

FACILITIES

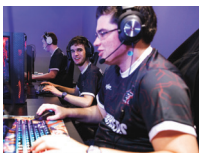
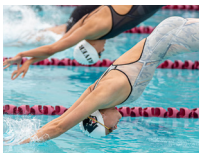
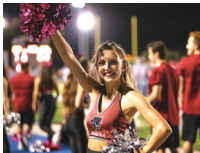
- Charles and Ruth Clemente Center
- Panther Aquatic Center
- Varsity Training Center
- VTC Field
- Rick Stottler Field
- Andy Seminick-Les Hall Field
- Nancy Bottge Field
- Canal 54
- Anchorage

All Florida Tech students receive free admission to Florida Tech athletics events.

To access information on our Athletic Department, visit the official online home of Panther Athletics at FloridaTechSports.com. On this website, you can locate all of the latest news, check out our teams' rosters and schedules as well as access the individual Florida Tech Athletics social media pages.

Additionally, at FloridaTechSports.com, you can find links to the Florida Tech Sports Network platform where you can access live stats, listen to audio broadcasts and watch games when live streaming is available.

floridatechsports.com



ESPORTS

Instagram Twitter YouTube Facebook @fittechesports

Calling all gamers—competitive or leisure! Esports is a term used to describe competitive video gaming and usually has an engaging spectator and entertainment element. Esports can be found in K–12, amateur, collegiate and professional levels of competition and learning. You will find our program entwined with various programs on campus, engaging with the community, hosting events and introducing career pathways.

RUTH FUNK CENTER FOR ESPORTS—FURNISHED GAMING AND ESPORTS FACILITY

- 36 Gaming PCs with 90+ games and apps
- Nintendo Switches, Xbox, PS4, Wii's
- Student console and lounge spaces perfect for a study break
- Competitive stage with viewing area
- Community game room aka PC Cafe

The Esports Center is FREE to use—Game On, Panthers!

LEVELS OF PARTICIPATION

- Varsity, JV and competitive teams—visit floridatech.edu/esports to see our offered titles
- Esports and Gaming Club—based on student interest. Join our Discord!
- Intramural leagues, community nights, weekly tournaments
- General campus use of facility—games, homework, come see us!
- Nonplayer roles such as team managers, analysts and production/broadcast
- Federal work-study, college role and volunteer positions

CONTACT INFO

- About us: floridatech.edu/esports
- Recruiting questionnaire: admissions.fit.edu/register/esports_interest
- Join our Discord: discord.gg/6Jf3xKr7Pr
- Want to collaborate, host an event with us or at the center or have questions?
Contact esports@fit.edu.



CLEMENTE CENTER FOR SPORTS AND RECREATION

Home to the Florida Tech Panthers, NCAA Division II members and competitors in the Sunshine State Conference, this 58,000-square-foot, state-of-the-art facility includes a varsity gym, intramural gym, large fitness center, group fitness room, multipurpose room, athletics offices and a healthy café/eatery. The fitness area features many options for strength training, cardio machines and group fitness classes for all skills and levels. With a seating capacity of 3,500, Clemente Center hosts the university's commencement ceremonies and many community events.

For hours and more information, visit floridatech.edu/clemente-center or call 321-674-7785.

PANTHER AQUATIC CENTER

The Panther Aquatic Center located between the Clemente Center and the Panther Dining Hall is a 32,000-square-foot facility featuring a competition pool and a recreation pool.

The competition pool boasts nine 25-yard lanes complete with a one-meter and a three-meter diving board. Its depth ranges from 5.5 to 13 feet. The recreation pool varies in depth from three to six feet and includes three 25-yard lanes, stair entry and wading benches. Both pools are equipped with geothermal heating and cooling systems.

For hours and more information, visit floridatech.edu/clemente-center/panther-aquatic-center or call 321-674-8708.



ALL FAITHS CENTER

@ftcatholic_panthers f @fitccm

All Faiths Center (also known as AFC) at Florida Tech is a place for community, prayer, service, leadership and fun. It is located at 3216 Engineering St., just west of L3Harris Village across the pond.

CATHOLIC CAMPUS MINISTRY

Catholic Campus Ministry welcomes everyone to join us at Sunday Mass, enjoy free dinners cooked by your fellow students or local Knights of Columbus, hang out at the All Faiths Center, team up with us in an intramural sport, serve those less fortunate on an Alternative Spring Break trip, and become leaders for our church. View our calendar to see all upcoming CCM events and contact any of our student leaders to get more involved. CCM is here to help you in your faith journey during your time at Florida Tech and have fun along the way!

Campus ministries can be reached at 321-674-8045.

- Fr. Randall Meissen, LC, Director of Catholic Ministry, rmeissen@fit.edu
- Lynn N. Jaime, Associate Director, ljaime@fit.edu
- Deacon Tom Stauffacher, tstauffa@fit.edu

FREE student spaghetti dinners every Wednesday, 6–7 p.m., in the All Faiths Center Fellowship Hall, sponsored by the Newman Club and funded through SAFC.



PROTESTANT CAMPUS MINISTRY

Protestant Campus Ministry is here to assist you in your relationship with God as you pursue your education and how that applies to living your life to the fullest. We are an interdenominational group that endeavors to work with multiple Christian churches and campus organizations. We strive to assist with the unique spiritual needs of the Florida Tech community by offering opportunities such as: FREE weekly Monday night dinners (served by local churches), leadership and/or ethical question discussions, Bible studies, community service projects, social activities, church referrals and counseling by our chaplains.

Protestant Campus Ministry may be reached at 321.674-8945

- Robert Harmon, chaplain@fit.edu
- Pam Tooley, Chaplain@fit.edu
- Roy Milton, acting PCM board chair

FREE student dinners every Monday at 6 p.m. co-sponsored by the Protestant Campus Ministry and the HOPE club, with assistance from SAFC and meals served by local churches. The HOPE club seeks to **Help Optimize Panther Engagement** thru fellowship, growth and service.

OFFICE OF STUDENT ADVISING

The Office of Student Advising (OSA) assists all undergraduate students (starting with the incoming class of Fall 2023) on the Melbourne campus by providing advising and programming that is geared toward student success. The Office of Student Advising is committed to:

- Providing quality academic advising for all first-time-in-college (FTIC) and transfer students
- Increasing students' awareness of the university's requirements, policies and procedures
- Collaborating with university faculty and staff to address individual student needs
- Providing educational and social events and programming, including overseeing Phi Eta Sigma Honor Society
- Promoting participation in student activities, organizations and civic engagement opportunities
- Connecting students to appropriate campus resources and support services on an ongoing basis
- Cheering students on along the way

OSA ADVISING

OSA advisors provide academic advising to all full-time, main campus, undergraduate students who enter the university starting in Fall 2024. Advisors work in collaboration with academic units and faculty to develop academic plans for students and evaluate their progress by providing accurate information about Florida Tech policies, processes and resources from admission to completion of their undergraduate degree. Student advisors will assist students in reviewing degree requirements, course selection, adding and dropping classes, handling registration issues, identifying appropriate campus resources, and provide guidance to meet their academic, professional and career goals.

OFFICE LOCATION & HOURS

OSA advisor locations varies. Please go to floridatech.edu/advising and contact your advisor for the most up-to-date location of your advisor. We are open Monday–Friday, 8 a.m.–5 p.m. Although walk-ins are welcome, scheduled appointments are given priority and are highly recommended. Appointments can be scheduled in person or through our website at floridatech.edu/advising/melbourne-campus-student-advisors-by-major.

TIPS FOR STUDENTS

- Check your Florida Tech email on a regular basis, as it is the official mode of communication between you and the university.
- Show up to appointments on time and prepared.
- Be respectful, honest and professional when communicating with others.
- Follow through on suggested actions and/or referrals.
- Get involved.
- Ask questions when you have them.



STUDENT SUCCESS AND SUPPORT CENTER

The Student Success and Support Center (SSSC) offers free peer tutoring for first- and second-year courses. Tutoring support is also available for many advanced-level courses. Students have the option to schedule one-on-one 30-minute or one hour tutoring session for the subject area of their choice.

PEER TUTORING, SUPPLEMENTAL INSTRUCTION AND EXAM REVIEWS

Tutoring services are led by undergraduates (peers) or graduate student assistants (GSAs) to provide clarification for course concepts, model problem-solving strategies, help deepen the understanding of course materials and review course content based upon the student's specific needs. To schedule an appointment, visit hub.fit.edu or load the Florida Tech HUB app.

Supplemental Instruction (SI) is a student-centered group-study model that utilizes undergraduate peer tutors or graduate students (SI Leaders) to facilitate recitation sessions for the lecture. The SI Leaders are up-to-date and educated on what you are learning in real-time. SI is a proactive way to ensure full understanding of the course materials and review on a weekly basis. Each SI session is one hour long. Multiple times are offered to accommodate varying schedules. You may attend as many as you see fit.

Exam Reviews are often scheduled throughout the semester before exams. These exam sessions are led by the GSA or tutor. Exam review schedules will be posted in Canvas and Engage.

Test proctoring services are available for students with accommodations and verified absences.

SSSC FUN FRIDAYS

Come check out SSSC Fun Fridays. Free popcorn and/or ice cream offered throughout the semester on specified Fridays. Please visit Engage to view the complete schedule.

OFFICE LOCATION & HOURS

The Student Success and Support Center (SSSC) is in the Allen S. Henry Building south of Panther Dining. Hours of Operation: Monday–Thursday, 8 a.m.–6 p.m. and Friday, 8 a.m.–5 p.m.

ACADEMIC SUCCESS TIPS:

- Your professor is your best resource
- Good time management can impact your semester... we can help
- Come to your tutoring appointment with questions
- Practice reviewing course materials as you would practice playing a sport or musical instrument
- Use your resources and ask for help early and often
- Eat healthy, get rest and exercise

GPA CALCULATOR ON THE HUB

Login with your TRACKS Account and click to import your grades. You can see how future and current classes will impact your GPA, Credits and Quality Points.



OFFICE FOR ACCESSIBILITY RESOURCES

Florida Tech is committed to equal opportunity for persons with disabilities in the participation of activities operated or sponsored by the university. Therefore, students with documented disabilities are entitled to reasonable educational accommodations.

The Office of Accessibility Resources (OAR) supports students by assisting with interventions and engaging in case management services. The office is located at the SSSC in the Allen S. Henry building. Students seeking more information regarding academic accommodations should contact the accessibility resource specialist by visiting floridatech.edu/student-success-support-center/accessibility-resources or calling at 321-674-8285.

OFFICE LOCATION & HOURS

The Office of Accessibility Resources is in the Allen S. Henry Building south of Panther Dining. Hours of Operation: Monday–Friday, 8 a.m.–5 p.m.

CAREER SERVICES

The Office of Career Services provides career and job-search services to Florida Tech students and alumni. The office's mission is to help students in the development of career plans and job search skills. Career Services acts as a liaison among Florida Tech students, alumni, faculty, staff and employers.

PANTHER CAREERS

Panther Careers is the main job resource database for full-time professional, internship, summer and part-time jobs for students and alumni. Students can also upload their résumé, schedule appointments and interviews, report work experiences and stay updated on all career events.



INDIVIDUAL APPOINTMENTS

Career Services offers individual appointments to students to assist with career advice, job search, résumé writing, LinkedIn profiles and interview preparation including mock interviews. All appointments can be scheduled in Panther Careers and are offered in person as well as virtually.

EMPLOYER EVENTS & MEETUPS

Career Services hosts employers on campus to meet students, speak about their company and highlight professional positions and internships they are currently recruiting. Employers also present workshops on career-related topics and frequently offer résumé review and mock interview programs by appointment. Events are offered both in person and virtually and are posted in Panther Careers.

CAREER EDUCATION WORKSHOPS AND WEBINARS

Career Services frequently presents workshops and webinars on topics such as résumé writing, job search techniques, interviewing skills, networking strategies and other career education topics. Workshops are offered both in person and virtually, and are posted in Panther Careers.

CAREER FAIRS

Career Services coordinates fall and spring semester recruiting events where employers can meet with qualified students either in person or virtually. More information on upcoming career fairs is available in Panther Careers.

*All students and alumni must be registered with Career Services on Panther Careers before requesting an appointment. Review all services at floridatech.edu/career/students.



CAREER SERVICES PROGRAMS

In addition to the services offered, the office helps students engage in work experience programs before they graduate.

CO-OP/INTERNSHIP PROGRAM—Students can earn academic credit for approved major-related work experiences.

ON-CAMPUS EMPLOYMENT—All campus jobs are posted on Workday (students must be on the campus network to access jobs). Some jobs are marked “FWS Only,” which are only for students who have received a federal work-study award from financial aid.

HOST A PANTHER EXTERNSHIP PROGRAM—Students can work with our employer partners during academic breaks through this job shadowing program to learn more about a particular industry, gain workplace experience and build their professional network.

For more information, contact career@fit.edu or visit floridatech.edu/career. Career Services is located in the Denius Student Center, first floor, behind the bookstore.



STUDENT HEALTH AND WELLNESS

Student Health and Wellness offers preventative and supplemental programs and services that are centered around mental, physical and emotional wellness, to promote an atmosphere that creates happy, healthy students. More information about programs and services can be found on our Engage page.



CARE TEAM

The CARE Team's mission is to promote the safety and well-being of the university community by engaging in proactive approaches to identify students who could benefit from resources and support, while focusing on student wellness and success. For more information, please visit floridatech.edu/student-affairs/student-health-and-wellness.



Care Form

COUNSELING CENTER

College can be a complex time for students, characterized by growth and change. While there are many benefits of advanced education, it also brings with it many challenges that can feel overwhelming. The Student Counseling Center can help students learn how to work through life's challenges, heal emotional pain and develop the necessary skills to lead healthy and balanced lives. Available services include counseling, crisis intervention, outreach/consultation and referral/resource information. For additional information, please visit the center's website at floridatech.edu/student-counseling-center or contact the center at 321-674-8050.



Counseling

HOLZER HEALTH CENTER

The Florida Tech Holzer Health Center provides optimal healthcare promoting lifelong healthy habits while supporting student in their academic endeavors. Registered students can schedule an appointment to see a healthcare provider with no copay for general office visits. Patients are financially responsible for any additional diagnostic testing procedures. When charges occur, students can choose to use their health insurance coverage or pay out-of-pocket. Appointments are available for a wide range of medical services, including medical evaluations for acute and chronic illness or injury. For additional information on services, please see our website at floridatech.edu/health. To schedule an appointment, please contact the Holzer Health Center at 321-674-8078.



Holzer Health Center

To schedule an appointment, call 321-674-8078.

HEALTH INSURANCE

All registered undergraduate students taking twelve (12) or more credit hours and graduate students taking nine (9) or more credits are automatically enrolled in the student health insurance plan, unless proof of other comparable coverage can be provided. Students must either opt-in/keep or waive the insurance coverage. Waivers are available to those full-time, domestic undergraduate and graduate students only.

It is mandatory for all international students to be covered by the university's health insurance plan. Visit the health insurance page for up to date information on enrollment/waiver periods and instructions on how to waive or setup your account to receive your student health insurance coverage information.



Student Health Insurance Program



L3HARRIS STUDENT DESIGN CENTER

The state-of-the-art L3Harris Student Design Center (L3HSDC) at Florida Tech provides space for students to work on all their design and manufacturing related projects. The 12,000-square-foot, single story building serves the College of Engineering and Science students working on projects from freshman design to senior design projects and everything in between. Student teams fabricate and assemble a variety of projects, from unmanned submersibles to rockets.

At the L3HSDC, students have access to advanced tools, such as CNC machines, soldering stations, electronic programming tools, waterjet, plasma, laser cutters and engravers, and more.

The L3HSDC or as it is commonly known, PANTHER-WORKS can handle a variety of projects of multiple shapes, sizes and types.

The high bay production area provides ample space to host large projects. This area offers more than a dozen fully equipped workstations that include various mechanical hand and power tools. In addition to the available tools, the L3HSDC has a welding station, an enclosed spray booth and a 2.5-ton overhead crane.

DESIGN CENTER FEATURES

- Workstations with space for project layout and construction, storage and tools.
- Flexible welding area with 'MIG' welding, equipped with directional-specific ventilation
- 2.5-ton overhead crane for large project handling
- Paint spray booth, featuring high-flow ventilation and breathing air for one operator
- Two large-format laser cutters
- Four independent axes—Hotwire CNC
- CNC plasma cutter
- Proto-MAX waterjet
- Electronics assembly and soldering
- Electronic prototyping room
- Two Tormach 440 CNC machines
- One Tormach 1100 CNC machine
- 3D print farm
- Computer-aided design room
- Ideation room/teleconference room

STUDENT SERVICES

HOUSING AND RESIDENCE HALLS

Housing can assist students with all components of the housing agreement process, such as signing up for new contracts and room changes. Students are reminded that housing agreements are for the full academic term (fall and spring semesters). Housing communicates closely with the Office of Residence Life to provide a holistic living environment to our residential students. Visit floridatech.edu/housing for more information. The Housing Office is temporarily located at Building 264 at the corner of Country Club Road and University Boulevard (220 W. University Blvd, Melbourne, FL 32901). Questions email us at housing@fit.edu.



Housing

LAUNDRY SERVICES

Having clean laundry is an essential part of living a healthy lifestyle. Each of the housing areas has at least one designated laundry facility. All our facilities are equipped with a digital laundry system that the student can access with the Speed Queen app. The app shares how many machines are available and sends alerts when your load is finished. All laundry services are free, so there is no need to worry about having quarters for clean clothes. Panther Bay students have a washer and dryer included in their apartment. Laundry questions can be answered by the Housing Department.

CONFERENCES AND EVENTS

The Office of University Events and Protocol oversees the campus-wide room scheduling system for use of Florida Tech's venues. Most venues may be reserved using the online event room reservation system located at calendar.fit.edu. Campus venues can be requested up to 6 months in advance by student organizations and venues must be requested at least 72 hours prior to the event via the online system. If you need a venue less than 72 hours prior to the event, have a request for a venue that you cannot locate using the room request system, have questions regarding the reservation process, or need assistance with coordinating service providers for your event, please call University Events and Protocol at 321-309-3836, or email conference@fit.edu, and we will be happy to assist with your reservation!

GLEASON PERFORMING ARTS CENTER

Get ready to experience campus life at its best! Our premier venue hosts the hottest events throughout the year and has just undergone a major facelift, boasting cutting-edge technology and sleek new features. It's the epicenter of creativity and energy, home to the College Players, Florida Tech's awesome student theatre group. Whether you're into epic performances, mind-blowing lectures or want to dive into the world of production and events, this is your go-to spot. Don't miss out—connect with the center manager for incredible opportunities! Check out all the details at floridatech.edu/gleason.



Gleason

COPY CENTER

We are your on-campus solution for all your print needs. With our broad assortment of services, including passport photos, canvas prints, posters, résumés and more, the Copy Center is here to help you express your creative side. Find us in room 122 of Building 406 in the Academic Quad. Our friendly and knowledgeable staff will assist you with all your print needs. You can order from the comfort of your dorm online at floridatech.edu/DSF or floridatech.edu/copy.

CAMPUS BOOKSTORE

The Florida Tech Bookstore is operated by Barnes & Noble College and is on the first floor of the Denius Student Center. Stocked with textbooks, school supplies and Florida Tech-inspired clothing, we help you prepare for the semester academically and fashionably. Find and purchase your course materials and textbooks online. Use your Visa, MasterCard, Discover, Panther Cash or Barnes and Noble Gift Cards during checkout. Visit fit.bncollege.com for more information.



Bookstore

BANKING SERVICES

The Denius Student Center houses a full-service PNC Bank ATM, just to the left of the main entrance. Additionally, there is a JPMC ATM at Panther Dining Hall starting this year. Students are encouraged to open a local checking account as area merchants more readily accept local debit cards. Students are free to open an account with the financial institution of their choice. However, PNC Banking representatives will be on campus during orientation to answer questions and to facilitate opening accounts. Visit floridatech.edu/student-financial-services for more information.



Banking

MAILING AND SHIPPING SERVICES

Mailing and Shipping Services is located in the Facilities Operations/Mail and Shipping building (540MIL), next to the Student Success and Support Center. We service all housed students including Mary Star of the Sea and Panther Bay. Students must use their Florida Tech email for notifications and show student ID for all parcel pickups. Only mail belonging to the student will be provided, no transfer or pickups on behalf of others.

Email: mail-ship@fit.edu | Phone: 321-674-7224 | Website: floridatech.edu/mail-ship

Mailroom

The Mailroom is located in the lobby of building 540 where students can pick up or send out any parcels, including USPS mail (letters, magazines, etc.). Mail is held 14 days, after which it is returned to sender. Uncollected advertisement mail (including coupons) will be disposed of after 14 days. Students can send off any parcels for UPS or FedEx through the Mailroom.



Mailroom

Hours of Operation: Monday–Friday, 8 a.m.–5 p.m.

Panther Parcel Lockers

These lockers are located in the lobby of building 540. Students will receive a code and notification sent to their Florida Tech email for pickup of all small to large packages. Packages may be picked up for up to 72 hours after notification.

Hours of Operation: Open 24/7 (after hours service, student ID required to access lobby)

Warehouse

Located in building 540 (back of building), across from The Scott Center for Autism Treatment, the warehouse is the pick-up location for all extra-large packages and expired Panther Parcel Locker packages. Packages are available in Panther Parcel Lockers for 72 hours, after which they are available for pickup from the warehouse for an additional five days before being returned to sender.

Hours of Operation: Monday–Friday, 8 a.m.–5 p.m.

AMAZON Hub Lockers

Managed by Amazon*, the third-party provided lockers are available to all students, staff and faculty. “Singularity” and “Town Center” are located at the Denius Student Center, outside the Panther Food Court. Search for Lockers at check-out and send directly from your cart. Pick-up window is usually 72 hours after notification of delivery from Amazon. * (Florida Tech has no responsibility in managing delivery service, use of lockers is directly between Amazon and user.)

EVANS LIBRARY

Evans Library and floridatech.edu/library are the gateway to all the information you need to be a successful student. Just ask!

SERVICES FOR YOU

- Textbooks and course materials on reserve
- Reservable group study rooms with big-screen computers
- Largest computer lab on campus
- Printing, copying and free scanning
- Friendly iDesk staff. You can ask them anything. If they don't know, they will find out.
- Full-body massage chairs on the first floor and in the DSL
- Wide selection of vending machines, including coffee, snacks, drinks, ice cream, sandwiches and more

TECHNOLOGY LENDING—FREE TO BORROW AT THE IDESK

- Laptops, iPads and phone chargers
- Arduinos, Raspberry Pis, Wacom tablet
- VR headsets, cameras, calculators and headphones
- Hammocks, projectors and more!



Technology Lending

ASSIGNMENT AND RESEARCH HELP

- Librarians are always available to answer your questions, in person or online
- Chat in real time with a Florida Tech librarian from the library home page
- Help finding library resources for papers and projects
- One-on-one consultations with librarians on any topic
- Video tutorials, workshops and research guides

INFORMATION RESOURCES

- Articles, journals, databases and ebooks are available wherever you are
- Books are on the 4th floor—the silent floor
- Free interlibrary loan for books and articles we don't have here

PERSONAL LIBRARIAN

- All incoming first-year students are assigned a personal librarian
 - Dedicated librarian to help you through your assignments, learning and research needs
- Stay tuned for personal librarian emails and events



Personal Librarian

EVANS LIBRARY HAS ALL THIS AND MORE. JUST ASK!

floridatech.edu/library



Library

DIGITAL SCHOLARSHIP LAB

The DSL on the library's second floor offers software and technology for all your needs.

- VR headsets and VR creation station
- Avatar and virtual environment development
- Video-enabled podcast studio
- Green screen video recording and editing station
- iMacs with Adobe Creative Suite
- Laser engraver and vinyl cutter
- 3D printing
- GIS mapping

CRAFTLAB

The CraftLab on the library's first floor is stocked with all types of equipment to render your creative impulses alive for school projects, clubs or organizations, dorms and more!

- Vinyl cutters
- Sublimation printer and heat presses
- Sewing machine
- Cricut maker
- More. Just ask!

EVANS LIBRARY HOURS

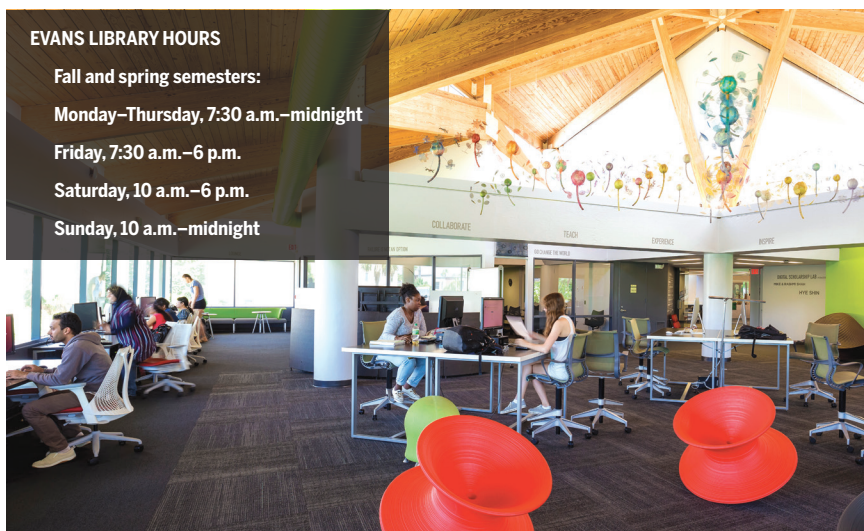
Fall and spring semesters:

Monday–Thursday, 7:30 a.m.–midnight

Friday, 7:30 a.m.–6 p.m.

Saturday, 10 a.m.–6 p.m.

Sunday, 10 a.m.–midnight



Meet with a successful Florida Tech alumnus for a **MOCK INTERVIEW** and career mentoring discussion!



We invite you to apply for an opportunity to participate in the Mock Interview Program by having us arrange a virtual networking session with a Florida Tech alumnus.

This is an opportunity to gain great interviewing and résumé-writing skills with CEOs, business owners and other high-level professionals while making valuable professional connections that will help your future career. The alumnus you meet for one hour just might become a long-term contact who can advise and help you as you launch your career.

**Please note that a mock interview is not guaranteed and is based on alumni availability, although we will make every effort to pair all interested participants.*

**Contact Timothy Worzick at tworzick@fit.edu or
321-674-6211 for more information.**





CAMPUS DINING

Campus Dining is passionate about providing gourmet culinary experiences and value to the campus community through excellence in customer service, food quality and engaging special events. Dining locations include Panther Dining Hall, Panther Grocery, Rathskeller Pizza and Grill, Center Court featuring Starbucks and Twisted Bliss Smoothies, and Panther Food Court featuring Einstein Bagel Bros., Firehouse Subs and Cosmic Creamery.

MEAL PLANS

All students living on campus must select one of the following meal plans:

- A1 Unlimited 7 Day*
Unlimited entry into Panther Dining during all open hours, plus 300 in FlexCredit
- A2 Unlimited 5 Day*
Entry into Panther Dining Hall Monday through Friday during all open hours, plus 500 in FlexCredit
- U1 Anytime 100
Includes 100 meals per semester in Panther Dining Hall and 980 in FlexCredit
- U2 All FlexCredit
1,980 in FlexCredit

**First-time-in-college students and transfer students with less than 29 credit hours must choose the A1 or A2 plan.*

Commuter plans are available for students living off campus or at Panther Bay Apartments.

- C1 Commuter All FlexCredit
750 in FlexCredit
- C2 Commuter All FlexCredit
500 in FlexCredit
- C3 Commuter All FlexCredit
250 in FlexCredit
- C4 Commuter Anytime 50
100 meals per semester at Panther Dining Hall and 75 in FlexCredit

MEAL PLAN BASICS

- Meal plan contract duration is the entire academic year (fall and spring semesters).
- Benefits are automatically awarded and billed by semester.
- Unlimited and "Anytime" Meals may only be used in Panther Dining Hall during any open hours for an "All You Care to Eat" visit or just to grab a quick snack. No transfer of meals or equivalency is offered for these meals. There is no residual cash value for unused meals.
- FlexCredit is the declining balance account that is included in your meal plan. FlexCredit can be used at all dining locations for dine-in (or delivery when available) and vending machines.
- Plans begin with lunch on the day residence halls open and end with dinner on the day residence halls close.
- FlexCredit rolls over from summer to fall and from fall to spring terms. To comply with state tax regulations, any balance left at the end of the spring term is forfeited. Please use all your FlexCredit during the academic year.
- Meal plans may be changed to any plan for which you are eligible in December for the spring term.
- Purchase meal plans at:
floridatech.edu/dining/meal-plans/academic-year-meal-plan-form

DID YOU KNOW?

- Campus Dining offers mobile ordering through the Campus Dining app.
- Campus Dining is allergy friendly.
- Campus Dining offers a reusable Dining2GO box program.

DINING2GO FAQ

How do I get my first Dining2GO box?

Boxes are available at Panther Dining Hall (PDH) for a \$5 deposit.

What can I put in the Dining2GO box?

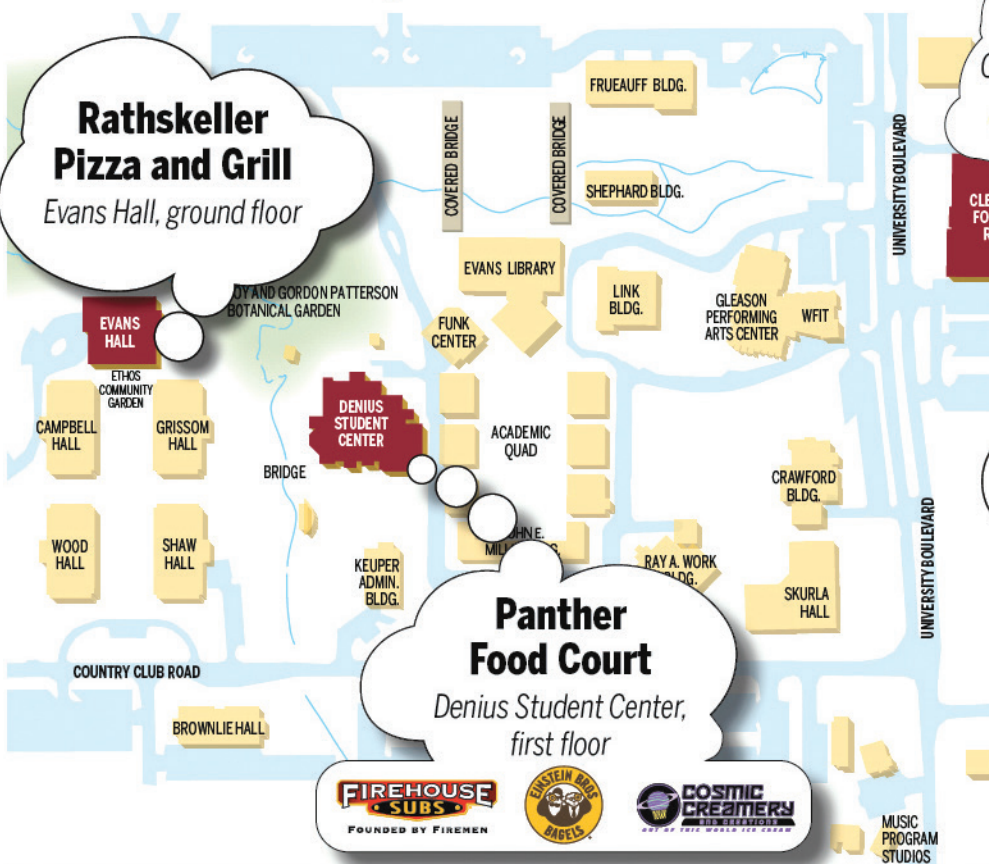
All food served at PDH is available 2GO.

How do I return my used box?

Rinse your box and return it to the OZZI drop box at PDH and pick up a new box or OZZI card to redeem for a new box later.



Florida Tech Dining Locations



◀ LOCATED OFF CAMPUS: **MICROMARKETS** | Bisk College of Business and

I lost my Dining2GO box or OZZI card. What do I do?

You may purchase a new 2GO box from the PDH cashier with FlexCredit, Panther Cash or credit card.

What do I do with my box or OZZI card at the end of the semester?

Please return your box or OZZI card to PDH and receive \$5 FlexCredit.



📍 @florida.tech.campusdining

floridatech.edu/dining



and Emil Buehler Center for Aviation Training & Research

TITLE IX AND EQUAL OPPORTUNITY

The Florida Tech Office of Title IX and Equal Opportunity oversees university Title IX Sexual Harassment policy and Nondiscrimination policy and investigates claims of discrimination and harassment based on any individual's race, color, creed, national or ethnic origin, gender, gender identity or expression, religion, disability, age, sexual orientation, genetic information, marital status, citizenship status, veteran status, and any other legally protected characteristic. Office of Title IX and Equal Opportunity is a neutral office at Florida Tech, ensuring fair, timely, and prompt response to allegations of discrimination and harassment under university nondiscrimination policies and provide oversight of the University's compliance with Title IX, Civil Rights Act: Titles VI and VII; Americans with Disabilities Act (ADA) and any related laws that prohibit discrimination, in all its forms, in either the University's academic or workplace environments.

HOW TO FILE A TITLE IX COMPLAINT

- Fill out the online complaint form: floridatech.edu/title-ix/reporting
- File in person with a Title IX Coordinator, see contact info below.
- Call the 24-hour Security Department: 321.674.8111

HOW TO FILE EO COMPLAINT

- fill out the online complaint form
- file in person or via email with the EO Director or EO Investigator, see contact info below

TITLE IX TEAM AT FLORIDA TECH

- Dennis Kwarteng, Title IX coordinator/Title IX coordinator & EO director • dkwarteng@fit.edu • 321-309-3068
- Kelsey Garrett, deputy Title IX coordinator & EO investigator • kgarrett@fit.edu • 321-674-7153
- Jennifer Mercurio, deputy athletic director/deputy Title IX coordinator • jmercurio@fit.edu • 321-674-8931
- Pat Francois, director of human resources/deputy Title IX coordinator • pfraancois@fit.edu • 321-674-8100

INVESTIGATIVE OPTIONS

If you choose not to be directed to a confidential source for disclosure and want to officially report the incident, you have the following options:

- Implementation of supportive measures, such as university no-contact agreement.
- Informal resolution by the Florida Tech Title IX and Equal Opportunity.
- Formal investigation by the Florida Tech Title IX and Equal Opportunity with disciplinary hearing.
- Investigation by law enforcement and a separate, formal investigation by the Florida Tech Title IX and Equal Opportunity.
- Investigation by law enforcement only (will still be reviewed by Title IX and Equal Opportunity for campus safety considerations).
- No investigative action.

Our institution uses the preponderance of the evidence standard of evidence, which means that the burden of proof is met when there's found to be more than a 50% chance that a claim is true.

SUPPORTIVE MEASURES

What supportive measures might be implemented to restore or preserve equal access to education, protect your safety and deter further discrimination, harassment, and/or retaliation? On our campus, they could include:

- Academic accommodations
- Residence hall/apartment moves
- Counseling
- No-contact orders
- Leaves of absence
- Class schedule changes

CONFIDENTIAL SUPPORT & SERVICES ON CAMPUS

- Student Counseling Center: floridatech.edu/student-counseling-center • 321-674-8050
- Holzer Student Health Center: floridatech.edu/health • 321-674-8078
- Campus Chaplain—Catholic: floridatech.edu/ccm • 321-674-8045
- Ombudsperson: floridatech.edu/ombuds • 321-309-3038

SUPPORT & SERVICES OFF CAMPUS

- Circles of Care (mental health crisis stabilization): circlesofcare.org • 321-914-0640 (24-hour intake services)
- Health First's Holmes Regional Medical Center: hf.org/hospitals_services/hrmc • 321-434-7000
1350 Hickory St., Melbourne, FL 32901
- LGBT National Help Center: glbthotline.org • 888-843-4564 • Email: help@LGBThotline.org
- Melbourne Police (9-1-1) • Nonemergency Number: 321-608-6731 • Criminal Investigations: 321-608-6443
- National Sexual Assault Hotline: rainn.org • 800-656-HOPE (800-656-4673)
- Serene Harbor (domestic violence center): sereneharbor.org • 24-Hour help line 321-726-8282

- Sexual Assault Victim Information: fcasv.org/information/victims
- Space Coast Pride: spacecoastpride.org • 317-800-1901 • Email: president@spacecoastpride.org
- Spektrum Health: spektrum.health/locations/melbourne • 321-294-0400 • 1920 S. Babcock St., Melbourne, FL 32901
- The Trevor Project: thetrevorproject.org • Text START to 678678 • Call at 866-488-7386
- Trans Lifeline: translifeline.org • 877-565-8860
- Victim Rights and Services: fcasv.org/publications/sexual-battery-victims-rights-and-services
- Women's Center: womenscenter.net • 321-242-3110

Our institution uses the preponderance of the evidence standard of evidence, which means that the burden of proof is met when there's found to be more than a 50% chance that a claim is true.

For further information on our support and services on and off campus, please scan the QR code to visit our website.



The Office of Title IX

CAMPUS SECURITY

GENERAL CAMPUS SECURITY POLICIES

There are two important elements in creating and maintaining protective programs and systems. First is an understanding of campus crime and safety hazards by students and employees. Next are methods of communication and action to reduce or eliminate security and safety threats and hazards.

Therefore, it is the policy of Florida Tech that all students and employees report criminal acts and safety hazards or occurrences known to them. The proper reporting procedure is to contact the Florida Tech Department of Security (321-674-8111). This number is available 24 hours a day. In the event of an immediate threat, danger, injury or criminal occurrence, students are advised to call the local EMERGENCY SERVICE by dialing 911 and then call Florida Tech Department of Security.

In all instances of criminal occurrence, loss of property, assault, threat, injury or attempted crime, the Florida Tech Department of Security must be contacted as soon as possible to facilitate proper reporting and resource utilization and to record the occurrence for further review and preventive action.



SAFETY QUICK TIPS

- Lock doors at all times (residence and vehicle).
- Do not “prop” doors open.
- Exercise, travel or jog with a friend.
- Be aware of unusual or suspicious persons or conditions.
- Stay in well-lit areas of campus.
- Call security to report crime or suspicious activity (321-674-8111).
- Call the local police (911) if danger is suspected or if you are threatened.



PARKING

Automobiles, motorcycles, motor scooters, mopeds and other motorized vehicles to be used on university property—including, but not limited to, university parking facilities—must be registered with the Florida Tech Department of Security. Visitor permits are free of charge to family and friends for up to a week at a time and are available 24/7 at the Security Welcome Center.

Upon vehicle registration, registrants will receive a parking sticker that must be displayed so that it is CLEARLY visible from the REAR of the vehicle (approximately 4 feet away).

General parking guidelines:

- All vehicles must be parked nose in.
- Only park in the areas your parking permit color allows.
- Security is permitted to “boot” and tow vehicles for failure to comply with campus regulations.
- Students are NEVER permitted to park in the Main Entrance Lot 1.

The following are NOT permitted on campus by faculty, staff or students:

- Personal golf carts
- Motorized skateboards
- Go carts

Florida Tech
Department of Security

Security Welcome Center • 3126 Panther Place, Building 544
Emergencies 321-674-8111 • Non-emergencies 321-674-8112

TRAFFIC

- Traffic rules, regulations and directive signs governing the use of motor vehicles are in effect 24 hours a day, seven days a week.
- Pedestrians have the right of way to vehicles only in pedestrian crosswalks.
- Bicycles and skateboards must yield right of way to pedestrians in all cases including areas not designated as crosswalks.
- The campus speed limit is 10 mph. Vehicle speed may be enforced by radar.
- The speed limit on Country Club Road and University Boulevard adjacent to campus is 25 mph.
- Driving around barricades, tearing down, altering, defacing, moving or removing any traffic control device is prohibited.
- All Florida traffic laws are applicable. The Florida Tech Department of Security operates 24 hours a day, seven days a week. Officers patrol the campus by marked vehicle, golf cart, bicycle and by foot patrol.
- Any criminal or suspicious activity that occurs on campus should be reported immediately to the Florida Tech Department of Security (321-674-8111).

THE FOLLOWING PREVENTIVE MEASURES WILL HELP MINIMIZE YOUR CHANCES OF BEING VICTIMIZED:



CAMPUS SAFETY

- If you are going out, tell someone where you are going and when you will return.
- Always lock your doors, and don't lend the key out. Keys can be duplicated.
- Don't walk alone at night. Take a friend.
- Stay in well-lit areas.
- If you lose a key or believe someone has a key to your room, report this immediately to security (321-674-8111). The access control office can rekey your room (321-674-6832).
- Photocopy all important papers you carry in your purse or wallet, including your driver's license. Keep these photocopies in a safe place. This information will be invaluable if you lose your license or cards.
- Don't offer a ride to any individual you don't know, even if the person claims to be a student.
- Report any malfunctioning corridor, hallway or exterior lights to security.

SAFETY ON THE STREET

- Be alert. Look around you. Be aware of others on the street. Make it difficult for anyone to take you by surprise. Walk with keys in hand.
- Walk or bike with others if you have a choice. Try not to go alone.
- Stay on populated, well-lit streets when you can.
- If possible, avoid dark or concealed areas.
- If you think someone is following you, turn around and check so you are not caught off guard. Cross the street or change direction.
- Walk or run toward people, traffic or lights. Consider confronting the aggressor and saying, in a loud, firm voice, "Don't follow me!" Try to find an occupied building and perhaps throw something through the window, if necessary.
- If a car follows you or stops near you for directions, do not approach the car. Change direction if you feel threatened, and walk or run toward stores, a lighted house or other people.

SAFETY IN YOUR CAR

- Park in well-lit areas at night. Check the street before leaving the car. Park in full view of the front of stores and houses.
- Walk to your car with keys ready.
- If you have a flat tire, seek help by phone or at a nearby business. Beware of someone instantly appearing to offer help.
- Check the back seat before entering: someone could be hiding there.
- Keep the car doors locked at ALL TIMES, even when driving in daylight, so no one can jump in at a red light.
- Keep enough gas in your tank for emergencies.
- If you are followed by another car, drive to a police station or business that has lights on and people in it. You may not want to go directly home with someone following you. "Driveway robberies" are becoming more common.
- If your car breaks down, lift the hood, put on the flashers and wait inside with the doors locked for help. Ask people who stop to call the police or AAA for you. Don't go with anyone.
- Don't stop for stranded motorists. You are of greater help to them by calling the police or sheriff.

ELEVATOR SAFETY

- Trust your intuition. If you feel uncomfortable with someone on the elevator, you do not have to use the elevator. Go to a neighbor or call security.
- If you are in an elevator and someone suspicious enters, stand near the controls.

If necessary, you can press all the buttons or use the emergency alarm/phone. If it is a dormitory elevator, know where the resident advisor (RA) rooms are, and go to them if you feel threatened.

BICYCLE SAFETY

- Safety first—Safety equipment begins with the helmet. Wearing an approved helmet can reduce the risk of a head injury by up to 85% in the event of an accident. In addition, wear brightly colored or reflective clothing so you can be seen during the early morning and evening hours. However, avoid riding your bike at night. You should also carry a small first-aid kit in case of an emergency.
- Keep your bike in good shape—Make sure all parts are in good repair, and check your brakes, tires and gears often. Have a bike expert teach you the basics so you can continue routine maintenance. Your bicycle should be equipped with reflectors and lights.
- Follow traffic laws—Bicycles are considered vehicles, and cyclists should obey the same

traffic laws as motorists. Travel on the right side of the road with traffic, and do not ride on the sidewalk. Obey all stop signs, traffic lights and lane markings. Use proper hand signals before making any lane changes or turns.

- Check out other routes—Sometimes the main road may not be the safest way to travel by bike. Look into alternate routes with less motor vehicle traffic or better road conditions.
- Finding the correct fit—The most important factor in bicycling is finding a bike that fits you properly. You should be able to stand just over the top bar of the bike with your feet flat on the ground. A professional at a bike shop can assist in properly fitting you with an appropriate bike.

SKATEBOARDING SAFETY

- Give your board a safety check before each ride.
- Always wear safety gear.
- Never ride in the street.
- Obey the city laws. Observe traffic and areas where you can and cannot skate.
- Don't skate in crowds of nonskaters.
- Only one person per skateboard.
- Never hitch a ride from a car, bicycle, etc.
- Don't take chances—Complicated tricks require careful practice and a specially designated area.
- Learn to fall—Practice falling on a soft surface or grass.

JOGGING SAFETY

- Try to jog with a partner. Try to avoid running alone, even during the day. You could become injured from a fall and need help.
- Be aware of people around you.
- Stay on well-lit paths in open areas. Vary your route. Be suspicious of people you pass many times.
- Stay away from parked cars, especially those occupied by suspicious persons.

INFORMATION TECHNOLOGY

The Office of Information Technology provides the following services to the campus community:

TRACKS ACCOUNT

Florida Tech uses a single username and password to access services on campus. These services include email, web pages, library resources and more (it.fit.edu/accounts).

COMMON COMPUTING FACILITIES

- Applied Computing Center general purpose lab located on the third floor of the Evans Library
- Evans Hall Computing Lab, Room 209
- Olin Engineering Teaching Laboratories: PC Labs, Rooms 128, 130, 228, 130, 132

TECHNOLOGY SUPPORT

Single point of contact for technology-related problems: help.fit.edu or 321-674-7284.

INSTRUCTIONAL TECHNOLOGIES

Instructional Technologies manages general applications used for teaching and learning, including Canvas (our primary learning management system), Zoom (video conferencing), Panopto (video hosting), and dozens more integrated applications and plugins. We partner with academic leadership, faculty, and support staff across campus to foster student success through technology. For more information, visit it.fit.edu/student-resources.

CONNECTIVITY

All classrooms and residence halls are wired and wireless network for Internet service. For information about the university network, please visit it.fit.edu/information-and-policies/networks. For assistance with any of these services, please contact Technology Support by phone 321-674-7284, email techsupport@fit.edu or visiting it.fit.edu/support.

BE A
BETTER
HUMAN.



Cultivate your knowledge and awareness of diverse cultures and groups of people through the CULTURAL COMPETENCY CERTIFICATE program.

For more information,
please contact
studentlife@fit.edu.

STUDENT FINANCIAL ASSISTANCE

The Financial Aid office is your first stop for help with questions about scholarships, grants and the Free Application for Federal Student Aid (FAFSA). It is our goal to help guide students and their families through the financial aid process and to make the process as easy as possible.

Visit the Financial Aid office on the first floor of L3Harris Commons—no appointment needed. If you prefer to schedule an appointment, you can do so by visiting floridatech.edu/financialaid-appointment. You can also reach us via email at finaid@fit.edu or by phone at 321-674-8070.

OFFICE OF THE REGISTRAR

The Office of the Registrar is located on the ground floor of L3Harris Commons. The registrar's office provides academic support service to students, alumni, faculty, staff and the general public.

Staff members assist students with course registration, evaluate requests for transfer credit, maintain student records, help students with transcript requests, perform degree audits, produce the university catalog and academic calendars, and organize and staff Florida Tech's commencement ceremonies. They also provide administrative support to the university's noncredit programs in behavior analysis. The office is open Monday–Friday, 8:30 a.m.–4:30 p.m.

REGISTRATION

Students must be properly registered and have their tuition and fees validated for all courses they are attending. No student will be permitted to attend a class without being registered for the class, regardless of whether that class is being taken for credit, audit or continuing education units (CEUs).

REGISTERING ONLINE

Students register and drop or add classes online once their advisor has approved them to do so. Students can register for classes and drop or add classes online through the end of the published drop/add period (usually at noon on Wednesday of the second week of classes).



Office of the Registrar

L3Harris Commons, first floor
321-674-8115 • registrar@fit.edu • floridatech.edu/registrar

HURRICANE SEASON

Hurricane season is June 1–Nov. 30 each year. The Atlantic names for the 2024 season are:

- | | | | | | | |
|-----------|------------|----------|----------|----------|----------|-----------|
| • Alberto | • Debby | • Gordon | • Joyce | • Milton | • Patty | • Tony |
| • Beryl | • Ernesto | • Helena | • Kirk | • Nadine | • Rafael | • Valeria |
| • Chris | • Francine | • Isaac | • Leslie | • Oscar | • Sara | • William |

HURRICANE FREQUENTLY ASKED QUESTIONS

You should be able to answer these questions before a hurricane arrives:

- What are the hurricane hazards?
- Where will I go and how will I get there?
- What actions should I take to be prepared?
- Do I have the necessary preparation supplies?

Are there any special steps students need to take to prepare for a hurricane?

- Students are expected to complete the Mandatory Hurricane Evacuation Plan. This electronic form will be posted on the main Florida Tech website and requires students to indicate where they plan to stay during a hurricane. This information is provided to Campus Security in the event they need to get in contact with a student.
- Students are encouraged to communicate with their parents regarding their plans should they be displaced upon a hurricane making landfall in the Melbourne area.
- Students are encouraged to unplug electronic devices (besides refrigerators) and remove personal items from the floors.
- Students should not tape residence hall windows.
- If students vacate their room, care should be taken when returning to their residence regarding the consumption of items in refrigerators/freezers as power outages might have caused temperature changes in these items.

When a hurricane is expected to make landfall in Brevard County, it is important to have a hurricane emergency supply kit. Your kit should include the following:

- Personal Identification (i.e., driver’s license, passport, etc.). Florida Tech student ID and insurance ID card. Secure important documents (passport/social security card) in waterproof containers or sealed plastic bags
- Water to last for three days—one gallon per person per day
- Nonperishable foods that can be prepared without the use of electricity, enough to last for three days—canned soup and vegetables, ready-to-eat fruit, peanut butter and crackers (Note- Substantial items are provided to students through Dining Services prior to landfall)
- Canned juices
- Nonelectric can opener
- Paper plates, paper cups and plenty of utensils
- First aid supplies and your medications
- Clothing
- Personal hygiene items—soap, toothbrush
- Bedding, in case you go to a shelter—blankets or sleeping bags
- Full tank of gas in your personal car
- Flashlight and battery-operated weather radio
- LOTS of batteries—make sure you have the right sizes for flashlights, radios, etc.
- Cash—enough to last for several days
- Games, schoolwork or other activities to keep yourself occupied



Mandatory Hurricane Evacuation Plan

How does Florida Tech communicate the institution’s plans related to a hurricane?

- The latest information will be available on the institution’s homepage (floridatech.edu) and emailed to students.
- Hurricane advisories are numbered so students can keep track of the latest information available from Florida Tech.
- Information will also be distributed through safety alerts that students can sign up for at floridatech.edu/security/safety-alerts.

How will I find out if I need to evacuate?

- The university will be communicating hurricane-related information through the Florida Tech website, Residence Life staff

What should I do if Florida Tech is evacuated?

- Evacuate early; don't delay (evacuation routes and access to accommodations are impeded nearer the time of landfall)
- First, try to find family or friends with whom to stay; it's more comfortable.
- If you can't stay with family or friends, go to a local shelter.
- The shelter for Florida Tech students living on campus is Meadowlane Intermediate School, 2700 Wingate Blvd., West Melbourne.
- Other shelters will open if Meadowlane Intermediate School is full, so watch the news or listen to the radio if the power is out.
- If the Florida Tech campus is evacuated and you do not have transportation, limited
- shuttle service will be provided by the Dean of Students Office. Shuttle schedules will be posted at Panther Dining Hall, the residential facilities and the security office (along with all other storm information on the fit.edu homepage).
- Notify family members where and when you plan to evacuate. Notify them when you arrive at your destination and don't forget to tell them when you head back to Melbourne and when you arrive, too.

What items should I bring to the shelter?

- Bedding—pillows, blankets, and/or a sleeping bag (local shelters may not provide cots)
- Medications
- Drinking water and snacks
- Entertainment—books, magazines, games
- Keep important documents with you—passport, birth certificate, driver's license, Florida Tech student ID and insurance ID card, inventory of valuable goods

When should I return to Florida Tech? When will classes resume?

You can find this information by:

- Listening to the radio (WFIT 89.5FM is the official station for Florida Tech hurricane information) and/or watching the local TV stations for announcements on when Florida Tech will reopen.
- Calling security at 321-674-8111 or calling toll-free 888-820-4636.
- Going to the Florida Tech home page, floridatech.edu.
- Security and Safety alerts—via the university emergency alert system. Please keep your emergency contact information current by updating your information in PAWS.

What about meals? Will Panther Dining Hall be serving food during the hurricane?

- No. Panther Dining Hall will serve the last meal approximately 12 hours before the expected hurricane landfall. After the storm passes, PDH will reopen as soon as it is safe for staff to travel to campus. Residence Life staff will attempt to let students know when Panther Dining Hall has reopened after the storm, as power outages may limit email communication to students.
- With a Category 1 or higher hurricane, a "to go" bag of snack food, fruit and water will be available for pick up at last meal service.
- Again, be sure to have plenty of bottled water (1 gallon per person per day) and nonperishable food.

What services are available before and after the hurricane makes potential landfall?

- Campus Security will remain staffed during the storm.
- After the hurricane passes through the Melbourne area, Facilities staff will return to campus to assess if there was damage sustained during the storm and start removing any debris.

For additional information on preparations before, during and after the storm:

- Contact your Resident Assistant (RA).
- Notify family members where and when you plan to evacuate. Notify them when you arrive, as well.
- Check the student handbook online at floridatech.edu/studenthandbook
- Refer to the Disaster, Emergency and Evacuation Plan online at: floridatech.edu/security/disaster-emergency--evacuation-plan. Or call the Student Affairs Office at 321-674-8080.

KNOW THE DIFFERENCE

A **HURRICANE WATCH**, issued for your part of the coast, indicates the possibility that you could experience hurricane conditions within 36 hours.

This watch should trigger your disaster plan, and protective measures should be initiated, especially those actions that require extra time such as packing your computer equipment, evacuating, etc.

A **HURRICANE WARNING**, issued for your part of the coast, indicates that sustained winds of at least 74 mph are expected within 24 hours or less.

Once this warning has been issued, you should be in the process of completing protective actions and deciding the safest location to be during the storm.

HURRICANE BASICS

Hurricane hazards come in many forms: storm surge, high winds, tornadoes and flooding. This means it is important for you to have a plan that includes all of these hazards. The first and most important thing anyone should do when facing a hurricane threat is to use common sense.

Hurricanes are classified based on their wind speed with the Saffir-Simpson Hurricane Wind Scale. This scale is commonly used to rate the damage potential of a hurricane.

The categories are:

- Tropical Storm—winds 39–73 mph
- Category 1 Hurricane—winds 74–95 mph (64–82 knots) No real damage to buildings. Damage to unanchored mobile homes. Some damage to poorly constructed signs. Also, some coastal flooding and minor pier damage. Examples: Irene 1999 and Allison 1995
- Category 2 Hurricane—winds 96–110 mph (83–95 knots) Some damage to building roofs, doors and windows. Considerable damage to mobile homes. Flooding damages piers. Small craft in unprotected moorings may break their moorings. Some trees blown down. Examples: Francis 2004, Bonnie 1998, Georges (FL and LA) 1998 and Gloria 1985
- Category 3 Hurricane—winds 111–130 mph (96–113 knots) Some structural damage to small residences and utility buildings. Large trees blown down. Mobile homes and poorly built signs destroyed. Flooding near the coast destroys smaller structures with larger structures damaged by floating debris. Terrain may be flooded well inland. Examples: Ivan 2004, Jeanne 2004, Keith 2000, Fran 1996, Opal 1995, Alicia 1983 and Betsy 1965
- Category 4 Hurricane—winds 131–155 mph (114–135 knots) More extensive curtainwall failures with some complete roof structure failure on small residences. Major erosion of beach areas. Terrain may be flooded well inland. Examples: Katrina 2005, Charley 2004, Hugo 1989 and Donna 1960
- Category 5 Hurricane—winds 156+ mph (135+ knots) Complete roof failure on many residences and industrial buildings. Some complete building failures with small utility buildings blown over or away. Flooding causes major damage to lower floors of all structures near the shoreline. Massive evacuation of residential areas may be required. Examples: Andrew (FL) 1992, Camille 1969 and Labor Day 1935

**For Additional
Information**

redcross.org (preparation/safety tips)
noaa.org (storm info) • fema.gov (relief info)

IMPORTANT INFORMATION

FLORIDA TECH STUDENT HANDBOOK

floridatech.edu/studenthandbook

All Florida Tech students are required to read and understand the university policies outlined in the current student handbook available online. Please direct any questions or concerns regarding the Florida Tech Student Handbook to the Student Affairs Office of the Dean of Students at 321-674-8080.



Student Handbook

VOTER REGISTRATION

U.S. citizens may register to vote by using this link: floridatech.turbovote.org. International students can also use the link to learn more or to stay up to date about United States elections. For more information, contact the Office of Student Life at 321-674-8824.



Housing Living Guide

SEXUAL OFFENDERS AND PREDATORS SEARCH

Any member of the Florida Tech community who wishes to obtain information regarding sexual offender/ predators in our area may refer to the Florida Department of Law Enforcement website—Sexual Offenders and Predators Search or call 888-FL-PREDATOR (888-357-7332).



REGISTER TO VOTE!

SIGN UP FOR TURBOVOTE AND
GET #VOTEREADY



Every student has the ability to register to vote and exercise their democratic rights and responsibilities. Sign up on Engage or scan this code!



ACADEMIC EXPECTATIONS

FLORIDA TECH EXPECTS ALL STUDENTS TO COMMIT TO ACHIEVE ACADEMIC SUCCESS AND IN TURN EXPECTS ALL FACULTY AND STAFF TO ASSIST STUDENTS IN EVERY WAY POSSIBLE TO SUSTAIN THIS COMMITMENT.

HERE ARE A FEW ITEMS THAT ARE EXPECTED OF ALL STUDENTS:

1. Attend class, and arrive on time.
2. Notify faculty members ahead of time when you anticipate a class absence. Students are responsible for material missed during absences, and it is the student's responsibility to complete and submit assigned work.
3. Recognize that you are primarily responsible for your success or your lack of success in each class. Ask for help when you need it. Good communication with faculty, staff and your peers is vital to academic achievement.
4. Develop a working knowledge of the Academic Honesty Policy (floridatech.edu/academic-honesty).
5. Purchase the textbooks and other required materials for each class after consulting with the course instructor and reading the course syllabus.
6. Read carefully the course syllabus for each class and follow the outlined expectations. Check and double-check due dates and procedures for completing assignments.
7. Keep a calendar of assignments and examinations. Understand that you are responsible for completing assignments on time, preparing for examinations and knowing exam times.
8. Come to class prepared and ready to participate actively in the class session. Read assigned texts and other required materials carefully and comprehensively before the class session.
9. Participate in class through active listening, taking notes, asking questions, taking part in discussions, engaging your mind in the topic matter and respecting other viewpoints.
10. Study outside of class by reviewing course notes after each class session and studying in small groups with classmates.
11. Participate in study sessions or extra class sections offered throughout the semester.
12. Use the rule of thumb by studying two to three hours outside of class for every one hour in class. This means that your academic work is equivalent to a full-time job. Before considering outside employment, remember you already have a full-time job.
13. Help yourself by using the direct instructional assistance (one-on-one tutoring, weekly study groups and self-help materials) provided by the Student Success and Support Center (SSSC) (floridatech.edu/sssc).
14. Know the name, office location and hours, telephone number and email address for your academic advisor and your faculty members.
15. Check your university email account every day for important messages, and visit the university website for current information and general questions.
16. Learn how to use the library (lib.fit.edu) and other resources, such as the Student Counseling Center (floridatech.edu/student-counseling-center), the Health Center (floridatech.edu/health) and Clemente Center (floridatech.edu/clemente-center).
17. Develop a working knowledge of the Student Handbook (floridatech.edu/studenthandbook) as well as other important academic policies found in the university catalog and schedule of classes.

POLICY ON ACADEMIC INTEGRITY STATEMENT FOR STUDENTS ENTERING FLORIDA TECH

Student success at the university is built upon academic integrity. As Florida Tech students, you are expected to uphold the highest standards of academic integrity by making choices in your academic work that reflect the following values: honesty, trust, fairness, respect and responsibility.

The information below summarizes key points of the Academic Honesty Policy (floridatech.edu/academic-honesty). Students should familiarize themselves with this policy. Before taking courses at Florida Tech, you are required to read, understand and abide by the university's policy on academic honesty/integrity. The policy explains cheating and plagiarism, suggests ways to avoid them and lists the consequences for such violations.



To avoid violating the academic integrity policy, you must:

- Present your own original ideas in your coursework.
- Acknowledge all other sources of information in your coursework through proper citation.
- Complete your assignments independently and, if necessary, acknowledge collaboration (including artificial intelligence resources).
- Report the results of your research and/or lab work accurately.
- Be honest during your examinations.

Florida Tech regards violations of academic integrity as serious offenses. Failure to uphold the values of academic integrity threatens both the reputation of the university and the value of the degree. Penalties range from a failing grade in a course to suspension or dismissal from the university.

Find quick links to everything you need from the launchpad at
floridatech.edu/current-students.



Safety, security and peace of mind

at your fingertips!



Download the free **Florida Tech SAFE** app today!



We are here for you now and after graduation.
#Panther4Life



floridatech.edu/alumni | Alumni@fit.edu

CONNECT WITH US ON SOCIAL MEDIA AND SHARE YOUR #PANTHERPRIDE

@fitechalumni @floridatechalumniassociation @alumnifitech

Florida Institute of Technology does not discriminate on the basis of race, color, religion, sex, national origin, genetic information, sexual orientation, gender identity, disability, protected veteran status or any protected minority in the admission of students, administration of its educational policies, scholarship and loan programs, employment policies and athletic or other university-sponsored programs or activities. In accordance with Title IX of the Education Amendments of 1972, Florida Tech does not discriminate on the basis of sex.

20240531